

HABOTEST®

Dongguan Habotest Instrument Technology Co., Ltd.

0769-89383525
www.habotest.com
lisa.ye@habotest.com

17th Bld, Qinghu Industrial Zone,
Qingxi Town, Dongguan City,
Guangdong.

HABOTEST® 2025 New Products Catalog

Dongguan Habotest Instrument Technology Co., Ltd.

HABOTEST®



2025

New Products Catalog

Dongguan Habotest Instrument Technology Co., Ltd.



HABOTEST®

Dongguan Habotest Instrument Technology Co.,Ltd.



BRIEF INTRODUCTION

Dongguan Habotest Instrument Technology Co.,Ltd is an innovation oriented technology enterprise with an over 20 years R&D team, injection molding, professional production line and assembly capabilities.

We offering professional and innovative measuring products as Digital Multimeter, Digital Clamp Meter, Earth Resistance tester, Insulation Tester, Environmental detector and other detecting instruments for the worldwide customers to meet the growing global market demand, we also provide electronic test tools, measurement solutions and ODM and OEM services to specific customers.

Habotest now has over hundred various patents and set an independent innovation goal of reaching more than 100 authorized patents each year. After 20 years industry experience in research and development, Habotest standardized its management and quality systems, obtaining ISO9001-2008 and ISO/TS16949, CE, IEC safety standards and introducing financial ERP systems.

"Talents Oriented, Technology Leading, Quality Assurance, Global Commitment" is our tenet. With much devotion, Optimum Testers are ready to fully understand clients' requirements and work out full solutions for our valuable clients. We are aiming to build a long-lasting and win-win partnership with our worldwide customers.

CONTENTS



Infrared Thermal Imager

HT820	Thermal Image Camera For Smartphone	P01
HT821A NEW	Thermal Image Camera	P02
HT821As NEW	Thermal Image Camera	P02
HT821B NEW	Thermal Image Camera	P02
HT821CS NEW	Thermal Image Camera	P02



Endoscope

HT669A NEW	Industrial Endoscope	P03
HT669A-PRO NEW	Industrial Endoscope	P03



Insulation Tester

HT5203	Insulation Tester	P04
HT5205	Insulation Tester	P05



Earth Resistance Tester

HT2301	Earth Resistance Tester	P06
HT2302	Earth Resistance Tester	P07

RCD/LOOP Tester

HT5910	RCD/LOOP Tester	P08
--------	-----------------	-----



Smart Digital Multimeters

HT129	10000 Counts Smart Digital Multimeter	P09
HT116	10000 Counts Smart Digital Multimeter with T-RMS	P10
HT128	6000 Counts Smart Digital Multimeter Full screen	P11
HT126A	6000 Counts Smart Digital Multimeter	P12
HT126B	6000 Counts Smart Digital Multimeter	P12
HT126C NEW	6000 Counts Smart Digital Multimeter	P12
HT127A	6000 Counts Smart Digital Multimeter	P13
HT127B	6000 Counts Smart Digital Multimeter	P13
HT112A	2000 Counts Smart Digital Multimeter	P14
HT112B	6000 Counts Smart Digital Multimeter	P14
HT124A	4000 Counts Smart Digital Multimeter	P15
HT124A+	4000 Counts Smart Digital Multimeter	P15
HT124B	4000 Counts Smart Digital Multimeter	P16
HT124B+	4000 Counts Smart Digital Multimeter	P16
HT125A	4000 Counts Smart Digital Multimeter	P17
HT125B	4000 Counts Smart Digital Multimeter	P17
HT121	4000 Counts Smart Digital Multimeter	P18
HT122	4000 Counts Smart Digital Multimeter	P19
HT123	4000 Counts Smart Digital Multimeter	P20
HT109L	4000 Counts Smart Digital Multimeter	P21
HT93	2000 Counts Smart Digital Multimeter	P22

Digital Multimeter

HT118A	6000 Counts Digital Multimeter With T-RMS/Autorange	P23
HT118C	6000 Counts Digital Multimeter with T-RMS	P24
HT118D	6000 Counts Digital Multimeter with T-RMS	P24
HT118E	20000 Counts Digital Multimeter With T-RMS/Autorange	P25
HT118M NEW	Motorcar Digital Multimeter	P26
HT132A	6000 Counts Digital Multimeter With T-RMS/Autorange	P27
HT132C	6000 Counts Digital Multimeter with T-RMS	P27
HT132D	6000 Counts Digital Multimeter with T-RMS	P28
HT132E	20000 Counts Digital Multimeter With T-RMS/Autorange	P28
HT136A	6000 Counts Digital Multimeter with T-RMS	P29
HT136E	20000 Counts Digital Multimeter With T-RMS/Autorange	P29
HT136C NEW	6000 Counts Digital Multimeter with T-RMS	P30
HT136D NEW	6000 Counts Digital Multimeter with T-RMS	P30
HT135A	6000 Counts Digital Multimeter With T-RMS/Autorange	P31
HT135D	6000 Counts Digital Multimeter with T-RMS	P31
HT890C NEW	6000 Counts Digital Multimeter with T-RMS	P32



HT890D	NEW	6000 Counts	Digital Multimeter with T-RMS	P32
HT113		2000 Counts	Digital Multimeter	P33
HT113A		2000 Counts	Digital Multimeter	P33
HT113B		4000 Counts	Digital Multimeter With T-RMS/Autorange	P34
HT113C		6000 Counts	Digital Multimeter With T-RMS/Autorange	P34
HT131A		4000 Counts	Digital Multimeter/Autorange	P35
HT130A		2000 Counts	Digital Multimeter/Autorange	P36
HT130B		2000 Counts	Digital Multimeter	P36
HT108+		2000 Counts	Digital Multimeter	P37
HT108L+		2000 Counts	Digital Multimeter	P37
HT108C		4000 Counts	Digital Multimeter	P37



Digital Clamp Meter

HT208A		6000 Counts	AC Digital Clamp Meter	P38
HT208D		6000 Counts	AC/DC Digital Clamp Meter	P39
HT209D		6000 Counts	AC/DC Digital Clamp Meter	P40
HT203A	NEW	6000 Counts	AC Digital Clamp Meter	P41
HT203D		6000 Counts	AC/DC Smart Digital Clamp Me	P41
HT203AS	NEW	6000 Counts	AC Digital Clamp Meter	P41
HT203DS	NEW	6000 Counts	AC/DC Smart Digital Clamp Me	P41
HT205A		6000 Counts	AC Smart Digital Clamp Meter	P42
HT205D		6000 Counts	AC/DC Smart Digital Clamp Me	P42
HT205AS	NEW	6000 Counts	AC Smart Digital Clamp Meter ter	P42
HT205DS	NEW	6000 Counts	AC/DC Smart Digital Clamp Me	P42
HT206A		6000 Counts	AC Digital Clamp Meter	P43
HT206B		6000 Counts	AC Digital Clamp Meter	P43
HT206D		6000 Counts	AC/DC Digital Clamp Meter	P44
HT207A		2000 Counts	AC Digital Clamp Meter	P45
HT207B		4000 Counts	AC Digital Clamp Meter	P45
HT207D		6000 Counts	AC/DC Digital Clamp Meter	P46
HT212A		2000 Counts	AC Digital Clamp Meter	P47
HT212D		4000 Counts	AC/DC Digital Clamp Meter	P47
HT200A		2000 Counts	AC Digital Clamp Meter	P48
HT200B		2000 Counts	AC Digital Clamp Meter	P48
HT200D		2000 Counts	AC/DC Digital Clamp Meter	P49



Voltage Detector

HT86A			Voltage Tester	P50
HT86B			Voltage Tester	P50
HT89			Voltage Tester	P51
HT89A	NEW		Voltage Tester	P51
HT89C	NEW		Voltage Tester	P51
HT89E	NEW		Voltage Tester	P51
HT89F	NEW		Voltage Tester	P51
HT91A	NEW		Voltage Tester 400V	P52
HT91AP	NEW		Phase Voltage Tester 400V	P52
HT91D+	NEW		Voltage Tester& Read date	P52
HT91DP	NEW		Phase Voltage Tester	P52
HT91C+	NEW		Voltage Tester& Read date	P53
HT91CP	NEW		Phase Voltage Tester	P53
HT91E+	NEW		Voltage Tester& Read date	P53
HT91EP	NEW		Voltage Tester& Read date	P53
HT92			Voltage Tester	P54
HT92A	NEW		Voltage Tester	P54
HT90			Non-contact Voltage Detector	P54
HT100			Non-contact Voltage Detector	P55
HT100P			Non-contact Voltage/ Phase Detector	P55
HT101			Non-contact Voltage Detector	P56
HT103			Non-contact Voltage Detector	P56

Socket Tester

HT106A			Socket Tester with Voltage Test & RCD	P57
HT106B			Socket Tester with Voltage Test & GFCI	P57
HT106D			Socket Tester with Voltage Test & RCD	P57
HT106E			Socket Tester with Voltage Test & RCD	P57
HT106F			Socket Tester with Voltage Test & RCD	P57
HT106T			Socket Tester with Voltage Test & RCD	P57
HT107A			Socket Tester with Voltage Test & RCD	P58
HT107B			Socket Tester with Voltage Test & GFCI	P58
HT107D			Socket Tester with Voltage Test & RCD	P58
HT107E			Socket Tester with Voltage Test & RCD	P58
HT107F			Socket Tester with Voltage Test & RCD	P58
HT107T			Socket Tester with Voltage Test & RCD	P58
HT97A			Socket Tester with Voltage Test & RCD	P59
HT97B			Socket Tester with Voltage Test & GFCI	P59
HT97D			Socket Tester with Voltage Test & RCD	P59
HT97E			Socket Tester with Voltage Test & RCD	P59
HT97F			Socket Tester with Voltage Test & RCD	P59
HT97T			Socket Tester with Voltage Test & RCD	P59



Infrared Thermometer

HT641A	Infrared Thermometer	P60
HT641B	Infrared Thermometer	P60
HT641A+	Infrared Thermometer	P60
HT641B+	Infrared Thermometer	P60
HT650A	Infrared Thermometer	P61
HT650B	Infrared Thermometer	P61
HT650C	Infrared Thermometer With Ambient Temperature & Humidity	P62
HT651A	Infrared Thermometer	P63
HT651D	Infrared Thermometer With Ambient Temperature & Humidity & Dew Point	P63
HT658	Body Infrared Thermometer	P64



Digital Tachometer

HT670	NEW Digital Tachometer	P65
HT671	NEW Digital Tachometer	P65



Digital Refractometer

HT5100	NEW Digital Refractometer	P66
--------	----------------------------------	-----



Salinity Meter

HT5101	NEW Salinity Meter	P67
--------	---------------------------	-----



Environment Air Quality Tester

HT600	CO2 Recorder	P68
HT610	Environment Air Quality Tester	P69
HT612	Environment Air Quality Tester	P70



Gas Leak Detector

HT59	Gas Leak Detector	P71
HT59A	Gas Leak Detector	P71
HT60	Gas Leak Detector	P72
HT61	Gas Leak Detector	P72
HT61L	Gas Leak Detector	P73
HT66	Gas Leak Detector	P73
HT56	Gas Leak Detector	P74
HT56pro	Gas Leak Detector	P74
HT58pro	Gas Leak Detector	P75
HT608	NEW Gas Leak Detector	P75
HT609	Gas Leak Detector	P76
HT609pro	Gas Leak Detector	P76
HT601A	Gas Leak Detector	P77
HT601A+	Gas Leak Detector	P77
HT601A+PRO	NEW Gas Leak Detector	P77
HT601B	Gas Leak Detector	P77
HT601B+	Gas Leak Detector	P77
HT601B+PRO	NEW Gas Leak Detector	P77



Carbon Monoxide Detector

HT621	Carbon Monoxide Detector	P78
HT621+	NEW Carbon Monoxide Detector	P78
HT6019	NEW Carbon Monoxide Detector	P79
HT6020	NEW Carbon Monoxide Detector	P79



Halogen Detector

HT6000	NEW Halogen Detector	P80
HT6002	NEW Halogen Detector	P80



Digital Thermo-Hygrometers

HT680	Temperature & Humidity Meter	P81
HT681	Temperature & Humidity Meter	P81
HT682	Temperature & Humidity Meter	P82
HT683	Temperature & Humidity Meter	P82
HT62	Temperature & Humidity Meter	P83
HT607	Temperature & Humidity Meter	P84
HT618	Temperature & Humidity Meter	P85
HT690	Digital Meat Thermometer/One Test Lead	P86
HT691	Digital Meat Thermometer/One Test Lead	P87



Digital Luxmeters

HT63	Digital Luxmeter	P88
HT603	Digital Luxmeter	P89
HT620	Digital Light Meter	P90
HT620L	Digital LED Light Meter	P90



Digital Sound Level Meters

HT64	Sound Level Meter	P91
HT602A	Digital Sound Level Meter	P92
HT602B	Digital Sound Level Meter	P92
HT622A	Digital Sound Level Meter	P93
HT622B	Digital Sound Level Meter	P93



Digital Anemometers

HT605	Digital Anemometer	P94
HT605S	Digital Anemometer	P94
HT625A	Digital Anemometer	P95
HT625B	Digital Anemometer With Temperature & Humidity	P95



Moisture Meters

HT65	Wood Moisture Meter	P96
HT67	Wood Moisture Meter	P96
HT633	Wood Moisture Meter	P97
HT632	Wood Moisture Meter	P98



Differential Pressure Manometers

HT636	NEW Differential Pressure Manometer	P99
-------	--	-----



EMF Meter

HT627	EMF Meter	P100
HT628A	NEW EMF Meter	P101
HT628B	NEW EMF Meter	P101



Nuclear Radiation

HT629	Nuclear Radiation Detector	P102
HT81	NEW Nuclear Radiation Detector	P103



Coating Thickness Gauge

HT616	Coating Thickness Gauge	P104
-------	-------------------------	------



Brake Fluid Liquid Tester

HT662	Brake Fluid Moisture Detector	P105
HT663	Brake Fluid Moisture Detector	P105
HT663L NEW	Brake Fluid Moisture Detector	P105
HT5009 NEW	Brake Fluid Moisture Detector	P106
HT3500E NEW	Battery Tester	P106



Cable Tester

HT805 NEW	Optical Power Meter	P107
HT812	Cable Tester	P108
HT800AT/R NEW	Network Cable Tester	P109
HT800BT/R NEW	Network Cable Tester	P109
HT801AT/R NEW	Network Cable Tester	P110
HT801BT/R NEW	Network Cable Tester	P110



PH Meter

HT630A NEW	PH Meter	P111
HT630B NEW	PH Meter	P111
HT631A NEW	PH Meter	P112
HT631B NEW	PH Meter	P112



Test Leads

H3001	secondary injection molding watch rod + 90 degree bend plug / wire length 1m, 20awg / no trademark / bag	P113-114
H3002	secondary injection molding watch rod + 90 degree bend plug / wire length 0.8m, 22awg / no trademark / bag	
H3004	Meter bar + 90 degree bend plug / wire length 0.8m, 24awg / no trademark / bagged	
H3006	Probe / binding tape / no trademark	



Alligator Clip

H3101	Crocodile clip red
H3102	Crocodile clip Black



Thermometer Probe

H3412	WRN-01A
H3428A	K thermocouple / wrn-01b



Dust case

H206	Meter Soft Case
H601	Meter Soft Case
H208	Eva Hard Case
H116	Eva Hard Case
H126	Eva Hard Case



Tube Fuse

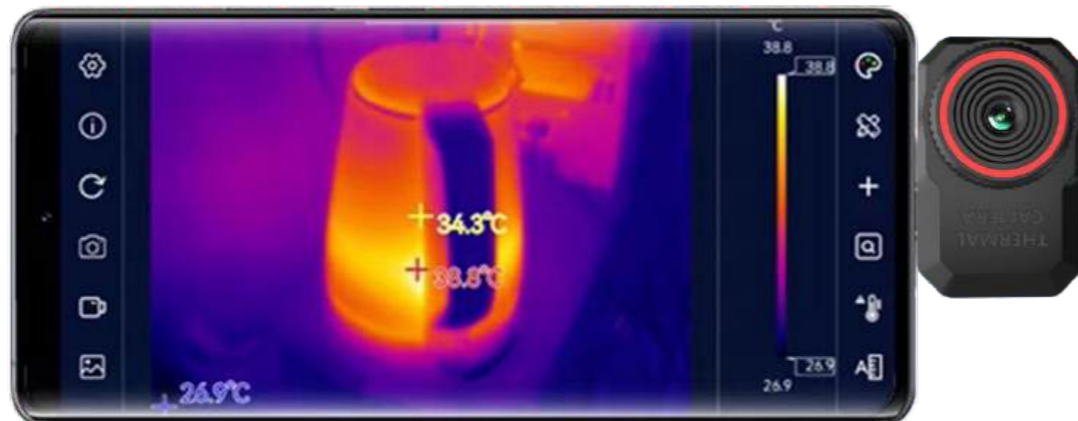
H3901	A : FF200MA/250V.Φ5*20.VDE/UL
	B : FF400MA/250V.Φ5*20.VDE/UL
	C : FF600MA/250V.Φ5*20.VDE/UL
	D : FF250MA/600V.Φ5*20.VDE/UL
	E : FF400MA/600V.Φ5*20.VDE/UL
	F : FF600MA/600V.Φ5*20.VDE/UL
H3902	A : FF10A/250V/Φ5*20.VDE/UL
	B : FF10A/600V/Φ5*20.VDE/UL
H3903	A : FF630mA/250V/Φ6*32mm.VDE/UL
	B : FF600mA/1000V/Φ6*32mm.VDE/UL
H3904	A : FF10A/250V/Φ6*32mm.VDE/UL
	B : FF10A/1000V/Φ6x32.VDE/UL

HT820

Thermal Image Camera for smart phone



Infrared thermal imaging	
resolution ratio	256x192
operating wavelength	8 ~ 14 μm
frame rate	25Hz
NETD	<50mK @25°C
camera lens	3.2mm
angle of field	56° x 42°
Temperature measurement range	-15°C ~ 600°C
temperature measurement accuracy	± 2°C or ± 2% of the reads
Software Function(APP)	
temperature measurement	Support high and low temperature automatic tracking, center point temperature measurement, point temperature measurement, regional temperature measurement, line temperature measurement, temperature range viewing
High temperature speed check	Support for a one-key quick check of the high-temperature area.
The interval shows temperature	support
Real-time image flipping	support
Image color board	Iron red, white hot, black hot, rainbow, red hot, cold blue
take a picture	Support to take photos
picture recording	Support video
Image editing	Support picture graffiti and text remarks
set up	Thermal imaging professional parameter configuration, temperature unit, language, high temperature alarm setting.
physical characteristics	
working temperature	-10°C ~ 75°C
Storage temperature	-45°C ~ 85°C
waterproof and dustproof	IP54
product size	34mm x 26.5mm x 15mm
net weight	Approx. 16.3g



Thermal Image Camera

HT821A/AS HT821B/CS



Function	HT821A	HT821As	HT821B	HT821Cs
Screen Size	2.8 inches	2.8 inches	2.8 inches	2.8 inches
Image Mode	Infrared	Infrared Light + Visible Light	Infrared Light + Visible Light	Infrared Light + Visible Light
Infrared Camera Resolution	96*96	96*96	120*90	256*192
Visible Light Camera Resolution	X	30M pixels	X	30M pixels
Screen Resolution	320 x 240	320 x 240	320 x 240	320 x 240
Spectral Range	8-14 μm	8-14 μm	8-14um	8-14 μm
Frame Rate	25	25	25	25
NETD (Noise Equivalent Temperature Difference)	≤40 mK(@25 °C,F#1.0)	≤40 mK(@25 °C,F#1.0)	60mK@25°C	≤40 mK(@25 °C,F#1.0)
Field of View (FOV)	50° x 37.2°	50° x 37.2°	38°X50°	50° x 37.2°
Lens	Thermal Imaging Lens, f=3.2mm	Thermal Imaging Lens, f=3.2mm	Thermal Imaging Lens, f=2.3mm	Thermal Imaging Lens, f=3.5mm
Temperature Measurement Range	Low Temperature: -20°C to 150°C High Temperature: 120°C to 550°C	Low Temperature: -20°C to 150°C High Temperature: 120°C to 550°C	Low Temperature: -20°C to 150°C High Temperature: 120°C to 400°C	Low Temperature: -20°C to 150°C High Temperature: 120°C to 550°C
Temperature Measurement Accuracy	±2°C or ±2% of the reading (whichever is greater)	±2°C or ±2% of the reading (whichever is greater)	±2°C or ±2% of the reading (whichever is greater)	±2°C or ±2% of the reading (whichever is greater)
Temperature Measurement	Temperature measurement of the highest point, lowest point, center point, and specific regions across the entire screen.	Temperature measurement of the highest point, lowest point, center point, and specific regions across the entire screen.	Temperature measurement of the highest point, lowest point, center point, and specific regions across the entire screen.	Temperature measurement of the highest point, lowest point, center point, and specific regions across the entire screen.
Distance Compensation	✓	✓	✓	✓
Color Palette	Iron Red White Hot Black Hot Rainbow Red Hot High Contrast Green Hot Lava	Iron Red White Hot Black Hot Rainbow Red Hot High Contrast Green Hot Lava	Iron Red White Hot Black Hot Rainbow Red Hot High Contrast Green Hot Lava	Iron Red White Hot Black Hot Rainbow Red Hot High Contrast Green Hot Lava
Language	12	12	12	12
Interface	USB Type-C(Supports charging and data transfer)	USB Type-C(Supports charging and data transfer)	USB Type-C(Supports charging and data transfer)	USB Type-C(Supports charging and data transfer)
Battery	2600mAh lithium battery	2600mAh lithium battery	2600mAh lithium battery	2600mAh lithium battery
Operating Time	4h	4h	4h	4h
Operating Temperature	-10°C~+60°C	-10°C~+60°C	-10°C~+60°C	-10°C~+60°C
Storage Temperature	-40°C~+85°C	-40°C~+85°C	-40°C~+85°C	-40°C~+85°C
LED	✓	X	✓	X
Storage Capacity	8G or 16G	8G or 16G	8G	8G or 16G
Image Storage Format	JPG	JPG	JPG	JPG
Video Recording Format	MP4	MP4	MP4	MP4
Macro	X	X	✓	X



HT669A/669A-PRO

Industrial Endoscope

NEW

Function	HT669A	HT669A PRO
Camera	x1	x2
Camera Resolution	1080p	1080p
Camera diameter	7mm	7.9mm
Focus Length	5CM	Main Camera A: 3CM – 9CM Side Camera B: 2CM– 6CM
View Angle	80°	76°
Cable Length	3m	3m
Cable Material	Stiff Cable	Stiff Cable
Screen Size	4.3 inches	5.0 inches
Display Definition	480*272	480*854
Photo Resolution	1080p	1080p
Video Resolution	720p	720p
Camera LED Light	6	6
Camera LED Light Adjustment	✓	✓
Screen Flip	✓	✓
Zoom in/out	✓	✓
Data Storage	✓	✓
Time Display	✓	✓
Time Setting	✓	✓
Battery Voltage Indication	✓	✓
Low Battery Voltage Indication	✓	✓
Screen Brightness Adjustment	✓	✓
Factory Set	✓	✓
Reset	✓	✓
Language	12	12
Flashlight	✓	✓
Automatic Power Off	✓	✓
USB Data Output	✓	✓
Working Voltage	DC5V	DC 5V
TF Card	32GB	32GB
Body Flash Light Power	0.2-0.25W	0.2-0.25W
Power 2000 Lithium Battery	x1	x2
Weight	Approx.300g	
Size	175X103X36mm	
QTY	5pcs	
Safety Rating	EN61326-1, EN60825-1	



Insulation Tester

HT5203



Function	Range	Accuracy
50V	0~20.00MΩ/20.0~200.0MΩ	±(3%reading+5word)
100V	0~20.00MΩ/20.0~200.0MΩ/0.200~1.000GΩ	±(3%reading+5word)
250V	0~20.00MΩ/20.0~200.0MΩ/0.200~2.000GΩ	±(3%reading+5word)
500V	0~20.00MΩ/20.0~200.0MΩ/0.200~2.000GΩ/2.00~20.00GΩ	±(3%reading+5word)
1000V	0~20.00MΩ/20.0~200.0MΩ/0.200~2.000GΩ/2.00~20.00GΩ	±(3%reading+5word)
DC voltage	1000V	±(1.0%reading+5word)
AC voltage	750V	±(1.0%reading+5word)
Power supply		8 X1.5V AA(LR) Batteries
Weight		Approx. 950g
Size		180x140x65mm
QTY		5pcs
Security Level		IEC/EN 61010-1 1000V CAT III , 600 V CAT IV

HT5205

Insulation Tester



Function	Range	Accuracy
100V	0~20.00MΩ/20.0~200.0MΩ/0.200~1.000GΩ	±(3%reading+5word)
250V	0~20.00MΩ/20.0~200.0MΩ/0.200~2.000GΩ	±(3%reading+5word)
500V	0~20.00MΩ/20.0~200.0MΩ/0.200~2.000GΩ /2.00~20.00GΩ	±(3%reading+5word)
1000V	0~20.00MΩ/20.0~200.0MΩ/0.200~2.000GΩ /2.00~20.00GΩ	±(3%reading+5word)
	20.0~100.0GΩ	±(5%reading+5word)
2500V	0~20.00MΩ/20.0~200.0MΩ/0.200~2.000GΩ /2.00~20.00GΩ	±(3%reading+5word)
	20.0~200.0GΩ	±(8%reading+5word)
DC voltage	1000V	±(1.0%reading+5word)
AC voltage	750V	±(1.0%reading+5word)
Power supply	8 X1.5V AA(LR) Batteries	
Weight	Approx. 950g	
Size	180x140x65mm	
QTY	5pcs	
Security Level	IEC/EN 61010-1 1000V CAT III , 600 V CAT IV	

Earth Resistance Tester

HT2301

Function	Range	Resolution	Accuracy
Resistance	0.01Ω~0.999Ω	0.001Ω	±(1.5%+0.01Ω)
	1Ω~9.99Ω	0.01Ω	±(1.5%+0.1Ω)
	10Ω~99.9Ω	0.1Ω	±(2.0%+0.3Ω)
	100Ω~199.9Ω	0.1Ω	±(3.0%+1Ω)
	200Ω~400Ω	5Ω	±(6.0%+5Ω)
	400Ω~500Ω	10Ω	±(10%+10Ω)
AC Current	500Ω~1200Ω	20Ω	±(25%+30Ω)
	0~100mA	0.1mA	±(2.5%+1mA)
	100~300mA	0.1mA	±(2.5%+2mA)
	1A	0.001A	±(2.5%+0.003A)
	3A	0.001A	±(2.5%+0.01A)
	10A	0.01A	±(2.5%+0.03A)
	20A	0.01A	±(2.5%+0.05A)
	30A	0.01A	±(2.5%+0.5A)
40A	0.01A	±(10%+0.5A)	
Data Storage	✓		
Alarm	✓		
Overload display	✓		
Data Hold	✓		
Low Battery Indication	✓		
Auto Power off	✓		
Usage environment	0~40°C/40~80%RH		
power supply	3.7V Li-ion battery 1200mA/h		
Weight	Approx. 1058g		
Size	278X125X54mm		
QTY	5PCS		
Safety Rating	EN61010-1 EN61557-3 EN61326-1		



HT2302

Earth Resistance Tester

RCD/LOOP Tester

HT5910



SPECIFICATIONS	RANGE	ACCURCY	RESOLUTION	FEATURE	GENERAL
Earth Ground Resistance	0Ω~29.99Ω	±(2%+6dgt)	0.01Ω	Digital Display & Analog Bars Display 2 Pole and 3 Pole Mode	Power Supply 8x1.5V AA battenes Product Size 188X145X73mm
	30Ω~99.9Ω	±(3%+3dgt)	0.1Ω	Earth Resistance By Constant Current Inverter 800Hz/3mA	Product Weight Approx.600g
	100Ω~999Ω	±(3%+3dgt)	1Ω	MAX/MIN/AVG/REL Measurement Functions	QTY 5PCS Safety Rating
	1.00kΩ~4.00kΩ	±(3%+3dgt)	10Ω	Data Logging:100 group Display Back Light	EN61010-1 EN61557-3 EN61326-1 CAT.IV 600V CAT.III 1000V
Earth Voltage	0V~200V(50~60Hz)	±(1%+5dgt)	0.1V	Low Battery Indication	

SPECIFICATIONS	RANGE	ACCURACY	RESOLUTION	FEATURE	GENERAL
Tripping time	x1 Δ N300 (slow 500ms) x5 Δ N40ms (slow 150ms)	±3ms	0.1ms	Auto Power Off	Power Supply 6x1.5V AA batteries
Tripping Current	(0.2-1.1)I _{ΔN}	±0.1I _{ΔN}	0.5I _{ΔN}	Display Back Light	Product Size 188X145X73mm
Contact Voltage	0~99.9V	±(10%+0.2V)	0.1V	Data logging And recall 100groups	Product Weight Approx.600g
Alternating Voltage (U _{L-N} , U _{L-L} , U _{L-E})	0~440V	±(3%+3V)	1V	Low Battery Indication	QTY 5PCS
Frequency	AC,45~65Hz	±1Hz	1Hz	USB2.0 Interface	Safety Rating
Loop Resistance(RL)	0.1~2000Ω	±(10%+0.2d)	0.1Ω		EN61010-1
RL Current Test	0.5 I _{ΔN}	±(10%+10d)	0.05I _{ΔN}		CAT.III 600V
Multiplying Power of Measuring Current	x0.5,x1,x5				
Current Level(I _{ΔN})	10mA,30mA,100mA,300mA,500mA				
Trigger Phase Angle	0°or 180°				

HT129

10000 Counts Smart Digital Multimeter



Specifications	Range	Accuracy
DC Voltage	99.99mV/999.9mV/9.999V/99.99V/999.9V	±(0.5%+3)
AC Voltage	99.99mV/999.9mV/9.999V/99.99V/750V	±(0.8%+3)
DC Current	9.999mA/99.99mA/600mA	±(0.8%+3)
AC Current	9.999mA/99.99mA/600mA	±(0.8%+3)
Resistance	999.9Ω/9.999KΩ/99.99KΩ/99.9KΩ/9.999MΩ/99.99 MΩ	±(1.0%+3)
Capacitance	9.999nF/99.99nF/999.9nF/9.999μF/99.99μF/999.9uF/9.999 mF /99.99 mF	±(3.0%+5)
Frequency	9.999Hz/99.99Hz/999.9Hz/9.999kHz/99.99kHz/999.9kHz/9.999MHz	±(1.0%+3)
Duty	1%~99%	±(1.0%+3)
Temperature	-40°C~1000°C/-40°F ~1832°F	±(2.0%+3)
Counts		10000
Display		VA
Auto/Manual Range		Auto
Live Test		✓
Ncv		✓
Diode Test		✓
Continuity		✓
Max /Min Data Hold		✓
Relative Value Test		✓
Data Hold		✓
True Rms		✓
Bandwidth		40~1KHz
Low Battery Indication		✓
Auto Power Off		✓
Back Light		✓
Work Light		✓
Battery Charge Function		✓
Power Indication Function		✓
Battery	3.7V Li-ion battery	
Weight	Approx.280g	
Size	167x83x30mm	
QTY	40pcs	
Safety Rating	EN61010-2-030 EN61010-2-033 CAT III 1000V	



10000 Counts Digital Smart Multimeter with T-RMS

HT116

Specifications	Range	Accuracy
DC Voltage	99.99mV/999.9mV/9.999V/99.9V/999.9V	±(0.5%+3)
AC Voltage	99.99mV/999.9mV/9.999V/99.9V/750V	±(0.8%+3)
DC Current	9.999mA/99.99mA/600mA	±(0.8%+3)
AC Current	9.999mA/99.99mA/600mA	±(1.0%+3)
Resistance	999.9Ω/9.999kΩ/99.99kΩ/999.9kΩ	±(0.8%+3)
Capacitance	9.999nF/99.99nF/999.9nF/9.999uF/99.99uF/999.9uF	±(4.0%+3)
Frequency	99.99Hz/999.9Hz/9.999kHz/99.99kHz/999.9kHz/9.999MHz	±(1.0%+3)
Duty	1.0%~99.0%	±(1.0%+3)
Temperature (°C/°F)	-40°C~1000°C -40°F~1832°F	±(1.0%+3)
Counts		10000 Counts
Auto/Manual Range		Auto/Manual
Display		VA
Bargraph		✓
Smart Function(AC/DC Voltage, Resistance And Continuity)		✓
Automatic Identification Of Current Input		✓
Live Test		✓(sound and light alarm)
NCV		✓(sound and light alarm)
Diode Test		✓
Continuity Test		✓(sound and light alarm)
Max/Min		✓
Relative Measurement		✓
Data Hold		✓
True RMS		✓
Fuse Burning Prompt Function		✓
Low Battery Indication		✓
Auto Power Off		✓
Flashlight		✓
Input Jack Led Indication		✓
Power	3x1.5V AAA batteries	
Weight	Approx.255g	
Size	165X85X25mm	
QTY	40pcs	
Safety Rating	EN61010-1,-2-030; EN61010-2-033, EN61326-1, CAT III 1000V, CATIV 600V	



HT128

HT128 6000 Counts Digital Smart Multimeter



Specifications	Range	Accuracy
DC Voltage	600.0mV/6.000V/60.00V/600.0V	±(0.5%+3)
AC Voltage	600.0mV/6.000V/60.00V/600.0V	±(1.0%+3)
DC Current	600.0mA/6.000A	±(1.2%+3)
	10A	±(1.5%+3)
AC Current	600.0mA/6.000A	±(1.5%+3)
	10A	±(2.0%+3)
Resistance	600.0Ω/6.000kΩ/60.00kΩ/600.0kΩ/6.000MΩ/60.00MΩ	±(1.0%+3)
	6.000nF/60.00nF/600.0nF/6.000μF/60.00μF/600.0uF/6.000/60.00 mF	±(4.0%+5)
Frequency	60.00Hz/600.0Hz/6.000kHz/60.00kHz/600.0kHz/6.00MHz/10.00MHz	±(1.0%+3)
	Duty	1%~99%
Temperature	-20°C~1000°C/-4°F~1832°F	±(1.0%+3)
Counts		6000
Display		VA
Auto/Manual Range		Auto
Live Test		✓
Ncv		✓
Diode Test		✓
Continuity		✓
Max /Min Data Hold		✓
Data Hold		✓
True Rms		✓
Bandwidth		40~1KHz
Low Battery Indication		✓
Auto Power Off		✓
Back Light		✓
Work Light		✓
Battery Charge Function		✓
Power Indication Function		✓
Battery	3.7V Li-ion battery	
Weight	Approx.217g	
Size	146x74x26mm	
QTY	40pcs	
Safety Rating	EN61010-2-030 EN61010-2-033 CAT III 600V	



6000 Counts Smart Digital Multimeter

HT126A/B/C

Specifications	Range	HT126A	HT126B	HT126C
DC Voltage	600mV/6V/60V/600V	±(0.5%+3)	±(0.5%+3)	±(0.5%+3)
AC Voltage	6V/60V/600V	±(0.8%+3)	±(0.8%+3)	±(1.0%+3)
DC Current	600mA/10A	±(1.2%+3)	±(1.2%+3)	±(1.2%+3)
AC Current	600mA/10A	±(1.5%+3)	±(1.5%+3)	±(1.5%+3)
Resistance	600Ω/6kΩ/60kΩ/600kΩ/6MΩ/60MΩ	±(1.0%+3)	±(1.0%+3)	±(1.0%+5)
	Capacitance	6nF/60nF/600nF/6μF/60μF/600μF/6mF/60mF	±(3.0%+5)	±(3.0%+5)
Frequency	60Hz/600Hz/6kHz/60kHz/600kHz	±(1.0%+3)	±(1.0%+3)	±(1.0%+3)
	Duty	10MHz ±(1.0%+3)	10MHz ±(1.0%+3)	±(2.0%+3)
Duty	1.0~99.0%	±(3.0%+3)	±(3.0%+3)	±(1.0%+3)
Temperature (K-type)	-40°C~1000°C (-40°F~1832°F)	✓	✓	±(1.0%+3)
Diode	0~3V	✓	✓	✓
NCV	Audio and light alarm	✓	✓	✓
Live	Audio and light alarm	✓	✓	
Continuity	<50Ω	✓	✓	✓
Counts		6000	6000	6000
Display		TN	VA	VA
Analog Bar		✓	✓	✓
Gear Display		✓	✓	✓
True RMS		✓	✓	✓
Data Hold		✓	✓	✓
Auto/Manual Range		Auto	Auto	Auto/Manual
Backlight		✓		
Flashlight		✓	✓	✓
The Probe Insert Error Tips		✓	✓	✓
Input Jack Indication		✓	✓	✓
Fuse Burnt Indication		✓	✓	✓
Low Battery Indication		✓	✓	✓
Auto Power Off		✓	✓	✓
Power	4x1.5V AAA batteries			
Weight	Approx.182g			
Size	146X73X26mm/144X73X41mm			
QTY	50pcs			
Safety Rating	EN61010-1,-2-030; EN61010-2-033, EN61326-1, CAT III 600V			



HT127A/B

6000 Counts Smart Digital Multimeter



Specifications	Range	Accuracy	
		HT127A	HT127B
DC Voltage	600mV/6V/60V/600V	±(0.5%+3)	±(0.5%+3)
AC Voltage	6V/60V/600V	±(0.8%+3)	±(0.8%+3)
DC Current	600mA/10A	±(1.2%+3)	±(1.2%+3)
AC Current	600mA/10A	±(1.5%+3)	±(1.5%+3)
Resistance	600Ω/6kΩ/60kΩ/600kΩ/6MΩ/60MΩ	±(1.0%+3)	±(1.0%+3)
Capacitance	6nF/60nF/600nF/6μF/60μF/600μF/6mF	±(3.0%+5)	±(3.0%+5)
Frequency	60Hz/600Hz/6kHz/60kHz/600kHz/6MHz/10MHz	±(1.0%+3)	±(1.0%+3)
Duty	1.0~99.0%	±(3.0%+3)	±(3.0%+3)
Temperature (K-Type)	-40°C~1000°C(-40°F~1832°F)	±(1.0%+3)	±(1.0%+3)
Diode	0~3V	✓	✓
NCV	Audio and light alarm	✓	✓
Live	Audio and light alarm	✓	✓
Continuity	<50Ω	✓	✓
Counts		6000	6000
Display		TN	VA
Analog Bar		✓	✓
Gear Display		✓	✓
True RMS		✓	✓
Data Hold		✓	✓
Auto/Manual Range		Auto	Auto
Backlight		✓	✓
Flashlight		✓	✓
The Probe Insert Error Tips		✓	✓
Input Jack Indication		✓	✓
Fuse Burnt Indication		✓	✓
Low Battery Indication		✓	✓
Auto Power Off		✓	✓
Power	4x1.5V AAA batteries		
Weight	Approx. 187g		
Size	145X72X26mm		
QTY	50pcs		
Safety Rating	EN61010-1,-2-030; EN61010-2-033, EN61326-1, CAT III 600V		



2000/6000 Counts Smart Digital Multimeter

HT112A/B

Specifications	Range	Accuracy	
		HT112A	HT112B
DC Voltage	60mV/600mV/6V/60V/600V		±(0.5%+3)
AC Voltage	2V/20V/200V/600V	±(0.5%+3)	
DC Current	6000uA/60mA/600mA		±(1.2%+5)
AC Current	20mA/200mA/600mA	±(1.2%+5)	
Resistance	600Ω/6kΩ/60kΩ/600kΩ/6MΩ/60MΩ		±(1.0%+5)
Capacitance	200Ω/2kΩ/20kΩ/200kΩ/2MΩ/20MΩ	±(1.0%+5)	
Frequency	6nF/60nF/600nF/6μF/60μF/600μF/6mF		±(4.0%+5)
Duty	10Hz/100Hz/1000Hz/10kHz/100kHz/1000kHz/10MHz		±(1.0%+5)
Counts		2000	6000
Auto/Manual Range		Auto	Auto
Smart Function		✓	✓
Auto Recognition Of Probe Inserted Into Current Input		✓	✓
Tips Of Blow The Fuse		✓	✓
Live Test		✓	✓
NCV		✓	✓
Diode Test		✓	✓
Continuity		✓	✓
Data Hold		✓	✓
True RMS		✓	✓
Low Battery Indication		✓	✓
Auto Power Off		✓	✓
Backlight		✓	✓
Flashlight		✓	✓
Power	2 x 3V CR2032 batteries		
Weight	Approx. 128g		
Size	133X68X19mm		
QTY	50pcs		
Safety Rating	EN61010-1,-2-030; EN61010-2-033, EN61326-1, CAT III 600V		



HT124A/A+

4000 Counts Smart Digital Multimeter



Specifications	Range	Accuracy	
		HT124A	HT124A+
DC Voltage	4V/40V/400V/600V	±(0.5% +3)	±(0.5% +3)
AC Voltage	4V/40V/400V/600V	±(0.8% +3)	±(0.8% +3)
Resistance	4000Ω/40kΩ/400kΩ 4MΩ/40MΩ	±(1.0% +5)	±(1.0% +5)
Frequency	4Hz/40Hz/400Hz 4kHz/40kHz/200kHz	±(1.0% +3)	±(1.0% +3)
NCV	Audio and light alarm	✓	✓
Live	Audio and light alarm	✓	✓
Continuity	<50Ω	✓	✓
Counts		4000	4000
Display		HTN	VA
Gear Display		✓	✓
True RMS		✓	✓
Data Hold		✓	✓
Auto/Manual Range		Auto	Auto
Backlight		✓	✓
Flashlight		✓	✓
Low Battery Indication		✓	✓
Auto Power Off		✓	✓
Power		2x1.5V AAA batteries	
Weight		Approx.92g	Approx.139g
Size		127X66X21mm	131X70X23mm
QTY	50pcs		
Safety Rating	EN61010-1,-2-030; EN61010-2-033, EN61326-1, CAT III 600V		



4000 Counts Smart Digital Multimeter

HT124B/B+

Specifications	Range	Accuracy	
		HT124B	HT124B+
DC Voltage	400mV/4V/40V/400V/600V	±(0.5% +3)	±(0.5% +3)
AC Voltage	4V/40V/400V/600V	±(0.8% +3)	±(0.8% +3)
Resistance	400Ω/4kΩ/40kΩ/400kΩ/4MΩ/40MΩ	±(1.0% +5)	±(1.0% +5)
Capacitance	4nF/40nF/400nF/4μF/40μF 400μF/4mF	±(4.0% +5)	±(4.0% +5)
Frequency	4Hz/40Hz/400Hz/4kHz/40kHz/400kHz/4MHz	±(1.0% +3)	±(1.0% +3)
Diode	0~2V	✓	✓
NCV	Audio and light alarm	✓	✓
Live	Audio and light alarm	✓	✓
Continuity	<50Ω	✓	✓
Counts		4000	4000
Display		HTN	VA
Analog Bar		✓	✓
Gear Display		✓	✓
True RMS		✓	✓
Data Hold		✓	✓
Auto/Manual Range		Auto	Auto
Backlight		✓	✓
Flashlight		✓	✓
Low Battery Indication		✓	✓
Auto Power Off		✓	✓
Power		2x1.5V AAA batteries	
Weight		Approx.92g	Approx.139g
Size		127X66X21mm	131X70X23mm
QTY	50pcs		
Safety Rating	EN61010-1,-2-030; EN61010-2-033, EN61326-1, CAT III 600V		



HT125A/B

4000 Counts Smart Digital Multimeter



Specifications	Range	Accuracy	
		HT125A	HT125B
DC Voltage	4V/40V/400V/600V	±(0.5% +3)	
	400mV/4V/40V/400V/600V		±(0.5% +3)
AC Voltage	4V/40V/400V/600V	±(0.8% +3)	±(0.8% +3)
Resistance	4000Ω/40kΩ/400kΩ/4MΩ/40MΩ	±(1.0% +5)	
	400Ω/4kΩ/40kΩ/400kΩ/4MΩ/40MΩ		±(1.0% +5)
Capacitance	4nF/40nF/400nF/4μF/40μF/400μF/4mF		±(4.0% +5)
Frequency	4Hz/40Hz/400Hz/4kHz/40kHz/200kHz	±(1.0% +3)	±(1.0% +3)
	4Hz/40Hz/400Hz/4kHz/40kHz/400kHz/4MHz		±(1.0% +3)
Diode	0~2V		✓
NCV	Audio and light alarm	✓	✓
Live	Audio and light alarm	✓	✓
Continuity	<50Ω	✓	✓
Counts		4000	4000
Display		HTN	HTN
Analog Bar			✓
Gear Display		✓	✓
True RMS		✓	✓
Data Hold		✓	✓
Auto/Manual Range		Auto	Auto
Backlight		✓	✓
Flashlight		✓	✓
Low Battery Indication		✓	✓
Auto Power Off		✓	✓
Power	2x1.5V AAA batteries		
Weight	Approx. 107g		
Size	127X66X20mm		
QTY	50pcs		
Safety Rating	EN61010-1,-2-030; EN61010-2-033, EN61326-1, CAT III 600V		



4000 Counts Smart Digital Multimeter

HT121

Specifications	Range	Accuracy
DC Voltage	4.000V/40.00V/400.0V/600V	±(0.5%+3)
AC Voltage	4.000V/40.00V/400.0V/600V	±(1.0%+3)
Resistance	400.0Ω/4.000KΩ/40.00KΩ/400.0KΩ/4.000MΩ/40.00MΩ	±(1.0%+5)
Capacitance	4.000nF/40.00nF/400.0nF/4.000μF/40.00μF	±(4.0%+5)
Frequency	40.00Hz/400.0Hz/4.000kHz/40.00kHz/400.0kHz/4.000MHz	±(1.0%+5)
Counts		4000
Auto/Manual Range		Auto
Smart Function (Auto Recognition Of Ac/Dc Voltage , Res, Cont)		✓
Live Test		✓
Diode		✓
Continuity		✓
Three-Phase Sequence Detection		✓
True RMS		✓
Low Battery Indication		✓
Auto Power Off		✓
Backlight		✓
Flashlight		✓
Power	2x1.5V AAA batteries	
Weight	Approx. 63g	
Size	189X30X30mm	
QTY	80pcs	
Safety Rating	EN61010-1,-2-030; EN61010-2-033, EN61326-1, CAT III 600V	



HT122

4000 Counts Smart Digital Multimeter



Specifications	Range	Accuracy
DC Voltage	4.000V/40.00V/400.0V/600V	±(0.5%+3)
AC Voltage	4.000V/40.00V/400.0V/600V	±(1.0%+3)
Resistance	400.0Ω/4.000KΩ/40.00KΩ/400.0KΩ/4.000MΩ/40.00MΩ	±(1.0%+5)
Capacitance	4.000nF/40.00nF/400.0nF/4.000mF/40.00mF	±(4.0%+5)
Frequency	40.00Hz/400.0Hz/4.000kHz/40.00kHz/400.0kHz/4.000MHz	±(1.0%+5)
Counts		4000
Auto/Manual Range		Auto
Smart Function (Auto Recognition Of Ac/Dc Voltage , Res, Cont)		✓
Live Test		✓
NCV		✓
Diode		✓
Continuity		✓
Three-Phase Sequence Detection		✓
True RMS		✓
Low Battery Indication		✓
Auto Power Off		✓
Backlight		✓
Flashlight		✓
Power	2x1.5V AAA batteries	
Weight	Approx.77g	
Size	176X30X28mm	
QTY	80pcs	
Safety Rating	EN61010-1,-2-030; EN61010-2-033, EN61326-1, CAT III 600V	



4000 Counts Smart Digital Multimeter

HT123

Specifications	Range	Functions
DC Voltage	4V/40V/400V/600V	±(0.5% +3)
AC Voltage	4V/40V/400V/600V	±(0.8% +3)
Resistance	4kΩ/40kΩ/400kΩ/4MΩ/40MΩ	±(1.0% +5)
Continuity		✓(<50Ω)
NCV		✓(with red/green light)
Count		4000
Display		TN
AC Bandwidth		40~1kHz
Data Hold		✓
Backlight		✓
Flashlight		✓
Beep		✓
Low Power Indicator		✓
Auto Off		✓
Power Supply	2x1.5V AAA batteries	
Weight	Approx.100g	
Size	122X62X29mm	
QTY	60pcs	
Safety Rating	EN61010-1,-2-030; EN61010-2-033, EN61326-1, CAT II 600V	



HT109L

4000 Counts Smart Digital Multimeter



Specifications	Range	Accuracy
DC Voltage	4V/40V/400V/600V	±(0.5% +3)
AC Voltage	4V/40V/400V/600V	±(0.8% +3)
Resistance	4kΩ/40kΩ/400kΩ/4MΩ/40MΩ	±(1.0% +5)
Continuity		✓(<50Ω)
NCV		✓(with red/green light)
Count		4000
Display With Gear Display		TN
AC Bandwidth		40~1kHz
Data Hold		✓
Backlight		✓
Flashlight		✓
Beep		✓
Low Power Indicator		✓
Auto Off		✓
Power Supply	2x1.5V AAA batteries	
Weight	Approx.70g	
Size	118mmX61mmX28mm	
QTY	60pcs	
Safety Rating	EN61010-1,-2-030; EN61010-2-033, EN61326-1, CAT II 600V	



2000 Counts Smart Digital Multimeter

HT93

Function	Range	Accuracy
DC Voltage	2.000V/20.00V/200.0V/600V	±(0.5%+3)
AC Voltage	2.000V/20.00V/200.0V/600V	±(1.0%+3)
Resistance	2000Ω/20.00kΩ/200.0kΩ/2.000MΩ/20.00MΩ	±(1.0%+3)
Counts		2000
Display		HTN
Auto/Manual range		Auto
Live test		✓
NCV		✓
Phase test		✓
Continuity		✓
data hold		✓
True RMS		✓
bandwidth		40~1KHz
Low battery indication		✓
Auto power off		✓
Back light		✓
Work light		✓
Battery		2x1.5V AAA batteries
Weight		Approx.112g
Size		137X44.5X34mm
QTY		50pcs
Safety Rating		EN61010-2-030 EN61010-2-033 CAT II 600V



HT118A

6000 Counts Digital Multimeter with T-RMS/Autorange



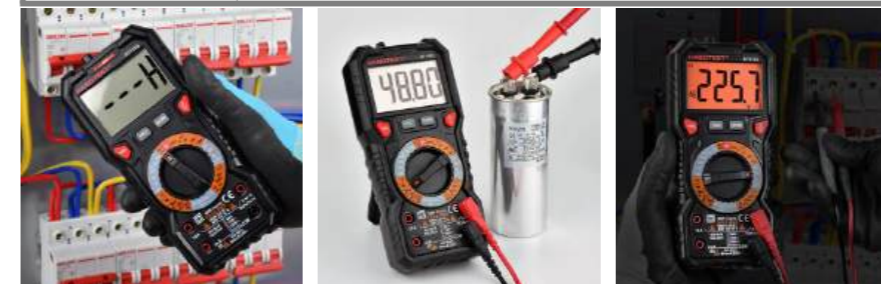
Specifications	Range	Accuracy	
		HT118C	HT118D
DC Voltage	600mV/6V/60V/600V/1000V	±(0.5%+3)	±(0.5%+3)
AC Voltage	600mV	±(0.8%+5)	±(0.8%+5)
	6V/60V/600V/750V	±(0.8%+5)	±(0.8%+5)
DC Current	600uA/6000uA/60mA/600mA	±(0.8%+3)	±(0.8%+3)
	10A	±(1.2%+3)	±(1.2%+3)
AC Current	600uA/6000uA/60mA/600mA	±(1.0%+3)	±(1.0%+3)
	10A	±(1.5%+3)	±(1.5%+3)
Resistance	600Ω/6kΩ/60kΩ/600kΩ/6MΩ/60MΩ	±(0.8%+3)	±(0.8%+3)
Capacitance	10nF/100nF/1μF/10μF/100μF/1mF/10mF	±(4.0%+3)	±(4.0%+3)
	100mF	±(5.0%+5)	±(5.0%+5)
Frequency	10Hz/100Hz/1kHz/10kHz/100kHz/1MHz/10MHz	±(1.0%+3)	±(1.0%+3)
Duty	1%~99%	±(1.0%+2)	±(1.0%+2)
Temperature (°C/°F)	-40°C~1000°C	±(1.0%+3)	±(1.0%+3)
	-40°F~1832°F	±(1.0%+3)	±(1.0%+3)
Counts		6000	6000
Auto/Manual Range		Manual	Manual
Display		LCD dual display	LCD dual display
Bargraph		✓	✓
Live Test (Sound And Light Alarm)		✓	✓
NCV (Sound And Light Alarm)		✓	✓
Diode Test		✓	✓
Continuity (Sound And Light Alarm)		✓	✓
Max/Min Hold		✓	✓
Data Hold		✓	✓
True RMS		✓	✓
Bandwidth		1kHz	1kHz
Low Battery Indication		✓	✓
Auto Power Off		✓	✓
Double Color Backlight		✓	✓
Input Jack Led Indicate		✓	✓
Work Light		✓	✓
Power	2x1.5V AA batteries		
Weight	Approx.325g		
Size	188x88x58mm		
QTY	40pcs		
Safety Rating	EN61010-1,-2-030; EN61010-2-033, EN61326-1, CAT III 1000V, CATIV 600V		



6000 Counts Digital Multimeter with T-RMS

HT118C/D

Specifications	Range	Accuracy	
		HT118C	HT118D
DC Voltage	600mV/6V/60V/600V/1000V	±(0.5%+3)	±(0.5%+3)
AC Voltage	6V/60V/600V/750V	±(0.8%+5)	±(0.8%+5)
		±(0.8%+5)	±(0.8%+5)
DC Current	60uA/60mA/600mA	±(0.8%+3)	±(0.8%+3)
	10A	±(1.2%+3)	±(1.2%+3)
AC Current	60mA/600mA	±(1.0%+3)	±(1.0%+3)
	10A	±(1.5%+3)	±(1.5%+3)
Resistance	600Ω/6kΩ/60kΩ/600kΩ/6MΩ/60MΩ	±(0.8%+3)	±(0.8%+3)
Capacitance	10nF/100nF/1μF/10μF/100μF/1mF/10mF	±(4.0%+3)	±(4.0%+3)
	100mF	±(5.0%+5)	±(5.0%+5)
Frequency	10Hz/100Hz/1kHz/10kHz/100kHz/1MHz/10MHz	±(1.0%+3)	±(1.0%+3)
Duty	1%~99%	±(1.0%+2)	±(1.0%+2)
Temperature (°C/°F)	-40°C~1000°C	±(1.0%+3)	±(1.0%+3)
	-40°F~1832°F	±(1.0%+3)	±(1.0%+3)
Counts		6000	6000
Auto/Manual Range		Manual	Manual
Display		LCD dual display	LCD dual display
Live Test (Sound And Light Alarm)		✓	✓
NCV (Sound And Light Alarm)		✓	✓
Diode Test		✓	✓
Continuity (Sound And Light Alarm)		✓	✓
Max/Min Hold		✓	✓
Data Hold		✓	✓
True RMS		✓	✓
Bandwidth		1kHz	1kHz
Battery Test (1.5V/9V)		✓	✓
Low Battery Indication		✓	✓
Auto Power Off		✓	✓
Double Color Backlight		✓	✓
Input Jack Led Indicate		✓	✓
Work Light		✓	✓
Power	2x1.5V AA batteries		
Weight	Approx.325g		
Size	188x88x58mm		
QTY	40pcs		
Safety Rating	EN61010-1,-2-030; EN61010-2-033, EN61326-1, CAT III 1000V, CATIV 600V		



HT118E

20000 Counts Digital Multimeter with T-RMS/Autorange



Specifications	Range	Accuracy
DC Voltage	200mV/2V/20V/200V/1000V	±(0.08%+5)
AC Voltage	200mV/2V/20V/200V/750V	±(1.0%+25)
DC Current	200uA/2000uA/20mA/200mA	±(0.5%+5)
	10A	±(1.0%+15)
AC Current	200uA/2000uA/20mA/200mA	±(1.0%+25)
	10A	±(1.5%+25)
Resistance	200Ω/2kΩ/20kΩ/200kΩ/2MΩ	±(1.0%+15)
	20MΩ/100MΩ	±(3.0%+25)
Resistance	20nF/200nF/2μF/20μF/200μF/2mF/20mF	±(4.0%+50)
Resistance	200Hz/2kHz/20kHz/200kHz/2MHz/10MHz	±(1.0%+10)
Duty	1%~99%	±(3.0%+30)
Temperature	-40°C~1000°C	±(1.0%+2°C)
	-4°F~1832°F	±(1.0%+2°F)
Counts	20000	
Display	LCD dual display	
Bargraph		✓
Live test		✓
NCV		✓
Diode Test		✓
Continuity		✓
Max/Min Hold		✓
Data Hold		✓
True RMS		✓
Low Battery Indication		✓
Auto Power Off		✓
Double Color Backlight		✓
Input Jack Led Indicate		✓
Work Light		✓
Power	2x1.5V AA batteries	
Weight	Approx.325g	
Size	188x88x58mm	
QTY	40pcs	
Safety Rating	EN61010-1,-2-030;EN61010-2-033,EN61326-1,CAT III 1000V, CATIV 600V	



Motorcar Digital Multimeter

HT118M

Functions	Range	Accuracy
DC Voltage	600.0mV/6.000V/60.00V/600.0V/1000V	±(0.5%+3)
AC Voltage	600.0mV/6.000V/60.00V/600.0V/750V	±(0.8%+5)
DC Current	600.0uA/6000uA/60.00mA/600.0mA/6.000A/10.00A	±(1.2%+3)
AC Current	600.0uA/6000uA/60.00mA/600.0mA/6.000A/10.00A	±(1.5%+3)
Resistance	600.0Ω/6.000kΩ/60.00kΩ/600.0kΩ	±(1.0%+3)
	6.000MΩ/60.00 MΩ	±(1.5%+3)
Capacitance	6.000nF/60.00nF/600.0nF/6.000uF/60.00uF/600.0uF	±(4.0%+5)
	60.00 mF	±(5.0%+5)
Frequency/duty	10.00Hz/100.0Hz/1.000kHz/10.00kHz/100.0kHz/1.000M Hz	±(1.0%+3)
	10.00MHz	±(3.0%+3)
	1.0 ~ 99.0%	±(1.0%+3)
Temperature	-40.0°C~0°C	±5% or ±3°C
	0°C~400°C	±1% or ±2°C
	400°C~1000°C	±2%
	-40°F~32°F	±5% or ±6°F
	32°F~752°F	±1% or ±4°F
	752°F~1832°F	±2%
Counts	6000	
Display	LCD with Barograph	
Auto/manual range	Manual range	
CAR TACH/DWELL(2,4,6,8,)		✓
Continuity		✓
Diode		✓
NCV/Live		✓
MAX/MIN		✓
Data hold		✓
Backlight		✓
Flashlight		✓
Low battery indication		✓
AUTO Power off		✓
True RMS		✓
Input Jack LED indication		✓
Fuse Burning Prompt Function		✓
POWER	3x1.5V AAA	
Safety Rating	EN61010-1,-2-030 EN61010-2-033, CAT III 1000V	



HT132A/C

6000 Counts Digital Multimeter with T-RMS Autorange



Specifications	Range	Accuracy	
		HT132A	HT132C
DC Voltage	600mV/6V/60V/600V/1000V	±(0.5%+3)	±(0.5%+3)
	600mV	±(0.8%+5)	
AC Voltage	6V/60V/600V/750V	±(0.8%+5)	±(0.8%+5)
	60uA/60mA/600mA		±(0.8%+3)
DC Current	600uA/6000uA/60mA/600mA	±(1.2%+3)	
	10A	±(1.2%+3)	±(1.2%+3)
	60mA/600mA		±(1.0%+3)
AC Current	600uA/6000uA/60mA/600mA	±(1.5%+3)	
	10A	±(1.5%+3)	±(1.5%+3)
	60mA/600mA		±(1.0%+3)
Resistance	600Ω/6kΩ/60kΩ/600kΩ/6MΩ/60MΩ	±(0.8%+3)	±(0.8%+3)
	10nF/100nF/1μF/10μF/100μF/1mF/10mF	±(4.0%+3)	±(4.0%+3)
Capacitance	100mF	±(5.0%+5)	±(5.0%+5)
	10Hz/100Hz/1kHz/10kHz/100kHz/1MHz/10MHz	±(1.0%+3)	±(1.0%+3)
Frequency			
Duty	1%~99%	±(1.0%+2)	±(1.0%+2)
Temperature (°C/°F)	-40°C~1000°C	±(1.0%+3)	±(1.0%+3)
	-40°F~1832°F	±(1.0%+3)	±(1.0%+3)
Counts		6000	6000
Auto/Manual Range		Auto	Manual
Display		LCD dual display	LCD dual display
Bargraph		✓	
Live Test (sound and light alarm)		✓	✓
NCV (sound and light alarm)		✓	✓
Diode Test		✓	✓
Continuity (sound and light alarm)		✓	✓
Max/Min Hold		✓	✓
Data Hold		✓	✓
True RMS		✓	✓
Bandwidth		40~1kHz	40~1kHz
Battery Test (1.5V/9V)			✓
Low Battery Indication		✓	✓
Auto Power Off		✓	✓
Double Color Backlight		✓	✓
Input Jack Led Indicate		✓	✓
Work Light		✓	✓
Power	2x1.5V AA batteries		
Weight	Approx.323g		
Size	188x88x58mm		
QTY	40pcs		
Safety Rating	EN61010-1,-2-030; EN61010-2-033; EN61326-1, CAT III 1000V, CATIV 600V		

20000/6000 Counts Digital Multimeter with T-RMS/Autorange

HT132D/E

Specifications	Range	Accuracy	
		HT132D	HT132E
DC Voltage	200mV/2V/20V/200V/1000V		±(0.08%+5)
	600mV/6V/60V/600V/1000V	±(0.5%+3)	
AC Voltage	200mV/2V/20V/200V/750V		±(1.0%+25)
	6V/60V/600V/750V	±(0.8%+5)	
DC Current	60uA/60mA/600mA	±(0.8%+3)	
	200uA/2000uA/20mA/200mA		±(0.5%+5)
	10A	±(1.2%+3)	±(1.0%+15)
AC Current	200uA/2000uA/20mA/200mA		±(1.0%+25)
	60mA/600mA	±(1.0%+3)	
	10A	±(1.5%+3)	±(1.5%+25)
Resistance	200Ω/2kΩ/20kΩ/200kΩ/2MΩ		±(1.0%+15)
	20MΩ/100MΩ		±(3.0%+25)
Capacitance	600Ω/6kΩ/60kΩ/600kΩ/6MΩ/60MΩ	±(0.8%+3)	
	10nF/100nF/1μF/10μF/100μF/1mF/10mF	±(4.0%+3)	
Frequency	100mF	±(5.0%+5)	
	20nF/200nF/2μF/20μF/200μF/2mF		±(4.0%+50)
Duty	10Hz/100Hz/1kHz/10kHz/100kHz/1MHz/10MHz	±(1.0%+3)	
	200Hz/2kHz/20kHz/200kHz/2MHz/10MHz		±(1.0%+10)
Temperature (°C/°F)	-40°C~1000°C		±(1.0%+2°C)
	-40°F~1832°F		±(1.0%+2°F)
Counts		6000	20000
Auto/Manual Range		Manual	Auto
Display		LCD dual display	LED dual display
Bargraph			✓
Live Test (sound and light alarm)		✓	✓
NCV (sound and light alarm)		✓	✓
Diode Test		✓	✓
Continuity (sound and light alarm)		✓	✓
Max/Min Hold		✓	✓
Data Hold		✓	✓
True RMS		✓	✓
Bandwidth		40~1kHz	40~1kHz
Battery Test (1.5V/9V)		✓	
Low Battery Indication		✓	✓
Auto Power Off		✓	✓
Double Color Backlight		✓	✓
Input Jack Led Indicate		✓	✓
Work Light		✓	✓
Power	2x1.5V AA batteries		
Weight	Approx.323g		
Size	188x88x58mm		
QTY	40pcs		
Safety Rating	EN61010-1,-2-030; EN61010-2-033; EN61326-1, CAT III 1000V, CATIV 600V		



HT136A/E

20000/6000 Counts Digital Multimeter with T-RMS Autorange



Function	Range	Accuracy	
		HT136A	HT136E
DC Voltage	600mV/9.999V/99.99V/999.9V	±(0.5%+3)	
	200mV/2V/20V/200V/1000V		±(0.08%+5)
AC Voltage	600mV/9.999V/99.99V/999.9V	±(0.8%+5)	
	200mV/2V/20V/200V/750V		±(1.0%+25)
DC Current	999.9uA/9999uA/99.99mA/999.9mA	±(0.8%+3)	
	10A	±(1.2%+3)	
	200uA/2000uA/20mA/200mA		±(0.5%+5)
	10A		±(1.0%+15)
AC Current	999.9uA/9999uA/99.99mA/999.9mA	±(1.0%+3)	
	10A	±(1.5%+3)	
	200uA/2000uA/20mA/200mA		±(1.0%+25)
Resistance	999.9Ω/9.999kΩ/99.99kΩ/999.9kΩ/9.999MΩ/99.99MΩ	±(0.8%+3)	
	200Ω/2kΩ/20kΩ/200kΩ/2MΩ		±(1.0%+15)
	20MΩ/100MΩ		±(3.0%+25)
Capacitance	9.999nF/99.99nF/999.9nF/9.999uF/99.99uF/999.9uF/9.999mF/99.99mF	±(4.0%+3)	
	20nF/200nF/2uF/20uF/200uF/2mF		±(4.0%+50)
Frequency	10Hz/100Hz/1kHz/10kHz/100kHz/1MHz/10MHz	±(1.0%+3)	
	200Hz/2kHz/20kHz/200kHz/2MHz/10MHz		±(1.0%+10)
Duty	1%~99%	±(1.0%+2)	±(3.0%+30)
Temperature (°C/°F)	-40°C~1000°C	±(1.0%+3)	±(1.0%+2°C)
	-40°F~1832°F	±(1.0%+3)	±(1.0%+2°F)
Counts		10000 Counts	20000 Counts
Bargraph		✓	✓
Live test		✓(sound and light alarm)	✓(sound and light alarm)
NCV		✓(sound and light alarm)	✓(sound and light alarm)
Diode test		✓	✓
Continuity		✓(sound and light alarm)	✓(sound and light alarm)
Max/Min hold		✓	✓
Data hold		✓	✓
True RMS		✓	✓
Low battery indication		✓	✓
Auto power off		✓	✓
Double color backlight		✓	✓
Input jack LED indicate		✓	✓
Work light		✓	✓
Power		2x1.5V AA batteries	
Weight		Approx.300g	
Size		186X91X54mm	
QTY		40pcs	
Safety Rating		EN61010-1,-2-030 EN61010-2-033, EN61326-1 CAT III 1000V,CATIV 600V	



NEW

6000 Counts Digital Multimeter with T-RMS

HT136C/D

Function	Range	Accuracy	
		HT136C	HT136D
DC Voltage	600mV/6V/60V/600V/1000V	±(0.5%+3)	±(0.5%+3)
AC Voltage	6V/60V/600V/750V	±(1.0%+3)	±(1.0%+3)
DC Current	600uA/60mA/600mA/600mA	±(1.2%+3)	±(1.2%+3)
	10A	±(1.5%+3)	±(1.5%+3)
AC Current	600uA/6mA/60mA/600mA	±(1.5%+3)	±(1.5%+3)
	10A	±(2.0%+3)	±(2.0%+3)
Resistance	600Ω/6kΩ/60kΩ/600kΩ/6MΩ/60MΩ	±(1.0%+3)	±(1.0%+3)
Capacitance	10nF/100nF/1uF/10uF/100uF/1mF/10mF	±(4.0%+5)	±(4.0%+5)
	100mF	±(5.0%+5)	±(5.0%+5)
Frequency	10Hz/100Hz/1kHz/10kHz/100kHz/1MHz/10MHz	±(1.0%+3)	±(1.0%+3)
Duty	1%~99%	±(3.0%+3)	±(3.0%+3)
Temperature	-20°C~1000°C /-4°F~1832°F	±(1.0%+3)	
Display		6000 Counts	6000 Counts
Auto/Manual range		Manual	Manual
Live test		✓(LED and Buzz)	✓(LED and Buzz)
NCV		✓(LED and Buzz)	✓(LED and Buzz)
Diode test		✓	✓
Triode test		✓	✓
Continuity		✓	✓
Max data hold		✓	✓
data hold		✓	✓
True RMS		✓	✓
bandwidth		40~1KHz	40~1KHz
Battery test (1.5V/9V)		✓	✓
Low battery indication		✓	✓
Auto power off		✓	✓
Back light		✓	✓
Work light		✓	✓
Power		2x1.5V AA batteries	
Weight		Approx.300g	
Size		186X91X54mm	
QTY		40pcs	
Safety Rating		EN61010-2-030 EN61010-2-033 CAT III 1000V	



HT135A/D

6000 Counts Digital Multimeter with T-RMS/Autorange



Function	Range	Accuracy	
		HT135A	HT135D
DC Voltage	400.0mV/4.000/40.00/400.0/1000V	±(0.5%+3)	±(0.5%+3)
AC Voltage	4.000/40.00/400.0/750V	±(1.0%+3)	±(1.0%+3)
DC Current	400.0uA/4000uA /40.00mA/400.0mA/10A	±(1.2%+3)	±(1.2%+3)
AC Current	400.0uA/4000uA /40.00mA/400.0mA/10A	±(1.5%+3)	±(1.5%+3)
Resistance	400.0Ω/4.000KΩ/40.00KΩ/400.0KΩ/ 4.000MΩ/40.00MΩ	±(1.0%+5)	±(1.0%+5)
Capacitance	4.000nF/40.00nF/400.0nF/4.000uF/40.00uF/ 400.0uF/4.000mF/40.00mF	±(4.0%+5)	±(4.0%+5)
Frequency	4.000Hz/40.00Hz/400.0Hz/4.000KHz/ 40.00KHz/400.0KHz/10MHz	±(1.0%+5)	±(1.0%+5)
Temperature	-20°C~1000°C (-4°F~1832°F)	±(1.0%+3)	
Counts		4000 Counts	4000 Counts
Auto/Manual range		Auto	Manual
Live test		✓	✓
NCV test		✓	✓
Battery voltage test			✓
Diode test		✓	✓
Continuity		✓	✓
Three-phase sequence detection		✓	✓
True RMS		✓	✓
Low battery indication		✓	✓
Auto power off		✓	✓
backlight		✓	✓
Flashlight		✓	
Power		3 X 1.5V AAA	
Weight		Approx.260g	
Size		179x83.5x53mm	
QTY		40pcs	
Safety Rating	EN61010-1,-2-030 EN61010-2-033, EN61326-1 CAT III 1000V,CATIV 600V		



6000 Counts Digital Multimeter with T-RMS

HT890C/D

Function	Range	Accuracy	
		HT890C	HT890D
DC Voltage	400.0mV/4.000/40.00/400.0/1000v	±(0.5%+3)	±(0.5%+3)
AC Voltage	4.000/40.00/400.0/750v	±(1.0%+3)	±(1.0%+3)
DC Current	400.0uA/4000uA /40.00mA/400.0mA/10A	±(1.2%+3)	±(1.2%+3)
AC Current	400.0uA/4000uA /40.00mA/400.0mA/10A	±(1.5%+3)	±(1.5%+3)
Resistance	400.0Ω/4.000KΩ/40.00KΩ/400.0KΩ/4.000 MΩ/40.00MΩ	±(1.0%+5)	±(1.0%+5)
Capacitance	4.000nF/40.00nF/400.0nF/4.000uF/40.00u F/400.0uF/4.000mF/40.00mF	±(4.0%+5)	±(4.0%+5)
Frequency	4.000HZ/40.00HZ/400.0HZ/4.000KHZ/40.0 0KHZ/400.0KHZ/4.000MHZ	±(1.0%+5)	±(1.0%+5)
Temperature	-20°C~1000°C (-4°F~1832°F)	±(1.0%+3)	
Counts		4000 Counts	4000 Counts
Auto/Manual range		Manual	Manual
Live test		✓	✓
NCV test		✓	✓
Battery voltage test		✓	✓
Diode test		✓	✓
Continuity		✓	✓
Three-phase sequence detection		✓	✓
True RMS		✓	✓
Low battery indication		✓	✓
Auto power off		✓	✓
backlight		✓	✓
Flashlight			
Power		3 X 1.5V AAA	
Weight		Approx.260g	
Size		179x83.5x53mm	
QTY		40pcs	
Safety Rating	EN61010-1,-2-030 EN61010-2-033, EN61326-1 CAT III 1000V,CATIV 600V		



HT113/HT113A

2000 Counts Digital Multimeter

6000/4000 Counts Digital Multimeter with T-RMS/Autorang

HT113B/HT113C



Specifications	Range	Accuracy	
		HT113	HT113A
DC Voltage	200mV/2V/20V/200V/600V	±(0.5%+3)	±(0.5%+3)
AC Voltage	200V/600V	±(1.0%+3)	±(1.0%+3)
DC Current	20mA/200mA	±(1.2%+3)	
	200mA		±(1.2%+3)
	10A	±(2.0%+3)	±(2.0%+3)
AC Current	200mA		±(1.5%+3)
	10A		±(2.0%+3)
Resistance	200Ω/2kΩ/20kΩ/200kΩ/2MΩ/20MΩ	±(1.0%+3)	±(1.0%+3)
Display		2000 Counts	2000 Counts
Auto/Manual Range		Manual	Manual
NCV			✓ (LED and Buzz)
Diode Test		✓	✓
Continuity		✓	✓ (LED and Buzz)
Max Data Hold			
Data Hold		✓	✓
True RMS			
Bandwidth		40~400Hz	40~400Hz
Battery Test (1.5V/9V)		✓	✓
Low Battery Indication		✓	✓
Auto Power Off		✓	✓
Back Light		✓	✓
Work Light			✓
Power		2x1.5V AAA batteries	
Weight		Approx.195g	Approx.206g
Size	151X75X48mm		
QTY	50pcs		
Safety Rating	EN61010-1,-2-030;EN61010-2-033, EN61326-1, CAT III 600V		

Specifications	Range	Accuracy	
		HT113B	HT113C
DC Voltage	400mV/4V/40V/400V/600V	±(0.5%+3)	
	600mV/6V/60V/600V		±(0.5%+3)
AC Voltage	4V/40V/400V/600V	±(1.0%+3)	
	600mV/6V/60V/600V		±(1.0%+3)
DC Current	400uA/4000uA/40mA/400mA	±(1.2%+3)	
	600uA/6000uA/60mA/600mA		±(1.2%+3)
	10A	±(2.0%+3)	±(2.0%+3)
AC Current	400uA/4000uA/40mA/400mA	±(1.5%+3)	
	600uA/6000uA/60mA/600mA		±(1.5%+3)
Resistance	400Ω/4kΩ/40kΩ/400kΩ/4MΩ/40MΩ	±(1.0%+3)	
	600Ω/6kΩ/60kΩ/600kΩ/6MΩ/60MΩ		±(1.0%+3)
Capacitance	10nF/100nF/1μF/10μF/100μF/1mF/10mF	4nF/40nF/400nF/4μF/40μF/400μF/4mF ±(4.0%+5)	±(4.0%+5)
			±(5.0%+5)
Frequency	10Hz/100Hz/1kHz/10kHz/100kHz/1MHz/10MHz		±(1.0%+3)
Duty	1%~99%		±(3.0%+3)
Display		4000 Counts	6000 Counts
Auto/Manual Range		Auto	Auto
Live Test			✓
NCV		✓ (LED and buzz)	✓ (LED and buzz)
Diode Test		✓	✓
Continuity		✓ (LED and buzz)	✓ (LED and buzz)
Max Data Hold		✓	✓
Data Hold		✓	✓
True RMS		✓	✓
Bandwidth		40~1KHz	40~1KHz
Battery Test (1.5V/9V)		✓	
Low Battery Indication		✓	✓
Auto Power Off		✓	✓
Back Light		✓	✓
Work Light		✓	✓
Power		2x1.5V AAA batteries	
Weight		Approx.206g	Approx.206g
Size	151X75X48mm		
QTY	50pcs		
Safety Rating	EN61010-1,-2-030; EN61010-2-033, EN61326-1, CAT III 600V		



HT131A

4000 Counts Digital Multimeter/Autorange



Specifications	Range	Accuracy	
		HT130A	HT130B
DC Voltage	400mV/4V/40V/400V/600V	±(0.5%+5)	
AC Voltage	400mV/4V/40V/400V/600V	±(1.0%+5)	
DC Current	40mA/400mA	±(1.2%+5)	
	10A	±(2.0%+5)	
AC Current	40mA/400mA	±(1.5%+5)	
	10A	±(2.0%+5)	
Resistance	400Ω/4kΩ/40kΩ/400kΩ/4MΩ/40MΩ	±(1.0%+5)	
Capacitance	4nF/40nF/400nF/4μF/40μF/400μF/4mF	±(4.0%+5)	
Counts		4000 Counts	
Auto/Manual Range		Auto	
True RMS		✓	
Continuity		✓	
Diode Test		✓	
Battery Test (1.5V/9V/12V)		✓	
NCV		✓	
Live		✓	
Data Hold		✓	
Max		✓	
Flashlight		✓	
Backlight		✓	
Auto Power Off		✓	
Low Battery Indication		✓	
Power	2x1.5V AAA batteries		
Weight	Approx.200g		
Size	151X75X48mm		
QTY	50pcs		
Safety Rating	EN61010-1,-2-030; EN61010-2-033; EN61326-1, CATIII 600V		



2000 Counts Digital Multimeter/Auto Range

HT130A/B

Specifications	Range	Accuracy	
		HT130A	HT130B
DC Voltage	200mV/2V/20V/200V/600V	±(0.5%+5)	±(1.0%+5)
AC Voltage	200mV/2V/20V/200V/600V	±(1.0%+5)	±(1.2%+5)
DC Current	20mA/200mA	±(1.2%+5)	±(1.5%+5)
	10A	±(2.0%+5)	±(2.0%+5)
AC Current	20mA/200mA	±(1.5%+5)	±(1.5%+5)
	10A	±(2.0%+5)	±(2.0%+5)
Resistance	200Ω/2kΩ/20kΩ/200kΩ/2MΩ/20MΩ	±(1.0%+5)	±(1.0%+5)
Capacitance	20nF/200nF/2uF/20uF/200uF/2mF	±(4.0%+5)	
Display		2000 Counts	2000 Counts
Auto/Manual Range		Auto	Manual
True RMS		✓	✓
Continuity		✓	✓
NCV			✓
Diode Test		✓	✓
Live		✓	✓
Data Hold		✓	✓
Max Measurement		✓	✓
Backlight		✓	✓
Auto Off		✓	✓
Low Power Indicator		✓	✓
Power	9V battery		
Weight	Approx.167g		
Size	142x73x45mm		
QTY	50pcs		
Safety Rating	EN61010-1,-2-030; EN61010-2-033; EN61326-1, CATIII 600V		



HT108+/HT108L+

2000 Counts Digital Multimeter



Specifications	Range	Accuracy	
		HT108+	HT108L+
DC Voltage	200mV/2V/20V/200V/600V	±(1.0%+5)	±(1.0%+5)
AC Voltage	20V/200V/600V	±(1.2%+5)	±(1.2%+5)
DC Current	20mA/200mA	±(1.5%+5)	±(1.5%+5)
	10A	±(2.0%+5)	±(2.0%+5)
Resistance	200Ω/2kΩ/20kΩ/200kΩ/2MΩ/20MΩ	±(1.2%+5)	±(1.2%+5)
Display		2000 counts	2000 counts
Auto/Manual Range		Manual	Manual
Diode Test		✓	✓
Continuity		✓	✓
Data Hold		✓	✓
True RMS		✓	✓
Low Battery Indication		✓	✓
Auto Power Off		✓	✓
Backlight			✓
Power	2x1.5V AAA batteries		
Weight	Approx. 106g		
Size	133x71x37mm		
QTY	60pcs		
Safety Rating	EN61010-1,-2-030; EN61010-2-033; EN61326-1, CAT III 600V		

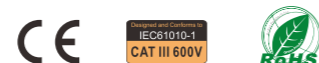


HT108C

4000 Counts Digital Multimeter



Function	Range	Accuracy
DC Voltage	400mV/4V/40V/400V/600V	±(1.0%+5)
AC Voltage	40V/400V/600V	±(1.2%+5)
DC Current	40mA/400mA	±(1.5%+5)
	10A	±(2.0%+5)
capacitance	4nF/40nF/400nF/4uF/40uF/400uF/4mF/40mF	±(4.0%+5)
Resistance	400Ω/4kΩ/40kΩ/400kΩ/4MΩ/40MΩ	±(1.2%+5)
Display		4000 counts
Auto/Manual range		Manual
NCV		✓
Diode test		✓
Continuity		✓
Data hold		✓
True RMS		✓
Low battery indication		✓
Auto power off		✓
Power	2x1.5V AAA batteries	
Weight	Approx. 106g	
Size	133x71x37mm	
QTY	60pcs	
Safety Rating	EN61010-1,-2-030; EN61010-2-033; EN61326-1, CAT III 600V	



6000 Counts AC Digital Clamp Meter

HT208A

Specifications	Range	Accuracy
DC Voltage	600mV/6V/60V/600V/1000V	±(0.5%+3)
AC Voltage	600mV/6V/60V/600V/750V	±(0.8%+3)
AC Current	60A/600A/1000A	±(2.5%+5)
Resistance	600Ω/6kΩ/60kΩ/600kΩ/6MΩ/60MΩ	±(0.8%+3)
Capacitance	10nF/100nF/1μF/10μF/100μF/1mF/10mF/100mF	±(3.0%+3)
Frequency	10Hz/100Hz/1kHz/10kHz/100kHz/1MHz/10MHz	±(0.5%+5)
Duty	1%~99%	±(1.0%+2)
Temperature (°C/°F)	-40°C~1000°C	±(1.0%+2)
	-40°F~1832°F	±(1.0%+2)
Counts		6000
Auto/Manual Range		Auto
Continuity		✓
Diode		✓
Data Hold		✓
NCV		✓
Backlight		✓
Flashlight		✓
Low Battery Indication		✓
Auto Power Off		✓
True RMS		✓
VFD		✓
Inrush		✓
Max/Min		✓
Rel		✓
Low-z		✓
VA-LCD		✓
Weight		Approx. 321g
Power	3x1.5V AAA batteries	
Size	240X85X47mm	
Jaw Size	Ø35mmX60mm	
QTY	30pcs	
Safety Rating	EN61010-1,-2-030; EN61010-2-033; EN61326-1 CAT III 1000V, CAT IV 600V	



HT208D

6000 Counts AC/DC Digital Clamp Meter



Specifications	Range	Accuracy
DC Voltage	600mV/6V/60V/600V/1000V	±(0.5%+5)/±(0.8%+5)
AC Voltage	600mV/6V/60V/600V/750V	±(0.8%+5)/±(1.0%+5)
DC Current	60A/600A/1000A	±(2.5%+8)
AC Current	60A/600A/1000A	±(2.5%+8)
Resistance	600Ω/6kΩ/60kΩ/600kΩ/6MΩ/60MΩ	±(1.0%+5)
Capacitance	10nF/100nF/1μF/10μF/100μF/1mF/10mF/100mF	±(4.0%+5)
Frequency	10Hz/100Hz/1kHz/10kHz/100kHz/1MHz/10MHz	±(5.0%+10)
Duty	1%~99%	±(1.0%+3)
Temperature (°C/°F)	-20°C~1000°C -4°F~1832°F	±(3.0%+3)
Counts	6000	
Auto/Manual Range	Auto	
Continuity	✓	
Diode	✓	
Data Hold	✓	
NCV	✓	
Backlight	✓	
Flashlight	✓	
DCA Zero	✓	
Low Battery Indication	✓	
Auto Power Off	✓	
True RMS	✓	
VFD	✓	
Inrush	✓	
Max/Min	✓	
Rel	✓	
Low-z	✓	
VA-LCD	✓	
Weight		Approx.309g
Power	3x1.5V AAA batteries	
Size	240X85X47mm	
Jaw Size	Ø35mmX60mm	
QTY	30pcs	
Safety Rating	EN61010-1,-2-030; EN61010-2-033; EN61326-1 CAT III 1000V, CAT IV 600V	



6000 Counts AC/DC Digital Clamp Meter

HT209D

Specifications	Range	Accuracy
DC Voltage	600mV/6V/60V/600V/1000V	±(0.5%+5)/±(0.8%+5)
AC Voltage	600mV/6V/60V/600V/750V	±(0.8%+5)/±(1.0%+5)
DC Current	60A/600A/1000A	±(2.5%+8)
AC Current	60A/600A/1000A	±(2.5%+8)
Resistance	600Ω/6kΩ/60kΩ/600kΩ/6MΩ/60MΩ	±(1.0%+5)
Capacitance	10nF/100nF/1μF/10μF/100μF/1mF/10mF/100mF	±(4.0%+5)
Frequency	10Hz/100Hz/1kHz/10kHz/100kHz/1MHz/10MHz	±(5.0%+10)
Duty	1%~99%	±(1.0%+3)
Temperature (°C/°F)	-20°C~1000°C -4°F~1832°F	±(3.0%+3)
Counts	6000	
Auto/Manual Range	Auto	
Continuity	✓	
Diode	✓	
Data Hold	✓	
NCV	✓	
Backlight	✓	
Flashlight	✓	
DCA Zero	✓	
Low Battery Indication	✓	
Auto Power Off	✓	
True RMS	✓	
VFD	✓	
Inrush	✓	
Max/Min	✓	
Rel	✓	
Low-z	✓	
VA-LCD	✓	
Weight		Approx.309g
Power	3x1.5V AAA batteries	
Size	240X85X47mm	
Jaw Size	Ø35mmX60mm	
QTY	30pcs	
Safety Rating	EN61010-1,-2-030; EN61010-2-033; EN61326-1 CAT III 1000V, CAT IV 600V	



HT203A/D/AS/DS

6000 Counts AC/DC Smart Digital Clamp Meter

NEW



Function	Range	Accuracy			
		HT203A	HT203D	HT203AS	HT203DS
DC Voltage	600mV/6V/60V/600V	±(0.5%+5)	±(0.5%+5)	±(1.0%+5)	±(1.0%+5)
AC Voltage	600mV/6V/60V/600V	±(0.8%+5)	±(0.8%+5)	±(1.0%+5)	±(1.0%+5)
DC Current	60A/600A		±(2.5%+5)		±(2.5%+5)
AC Current	60A/600A	±(2.5%+5)	±(2.5%+5)	±(2.5%+5)	±(2.5%+5)
Resistance	600Ω/6kΩ/60kΩ/600kΩ/6MΩ/60MΩ	±(1.0%+5)	±(1.0%+5)	±(1.0%+5)	±(1.0%+5)
Capacitance	6nF/60nF/600nF/6μF/60μF/600μF/6mF/60mF	±(4.0%+5)	±(4.0%+5)	±(4.0%+5)	±(4.0%+5)
Frequency	100Hz/1000Hz/10kHz/100kHz/1000kHz/10MHz	±(1.0%+3)	±(1.0%+3)	±(1.0%+3)	±(1.0%+3)
Duty	1%~99%	±(3.0%+3)	±(3.0%+3)	±(3.0%+3)	±(3.0%+3)
Temperature (°C/°F)	-40°C~1000°C -40°F~1832°F	±(1.0%+3) ±(1.0%+3)	±(1.0%+3) ±(1.0%+3)	±(1.0%+3) ±(1.0%+3)	±(1.0%+3) ±(1.0%+3)
Continuity	600Ω	✓	✓	✓	✓
Diode		✓	✓	✓	✓
NCV		✓	✓	✓	✓
Live		✓	✓	✓	✓
Counts		6000	6000	6000	6000
Analog bar		✓	✓	✓	✓
Data hold		✓	✓	✓	✓
Max/Min		✓	✓	✓	✓
Backlight		✓	✓	✓	✓
Flashlight		✓	✓	✓	✓
DCA ZERO			✓		✓
SMART(AUTO)		✓	✓	✓	✓
Low battery indication		✓	✓	✓	✓
Auto power off		✓	✓	✓	✓
True RMS		✓	✓	✓	✓
Power		3x1.5V AAA batteries			
Weight		Approx.206g			
Size		199x73x34mm			
Jaw Size		Ø26mmX43mm			
QTY		40pcs			
Safety Rating		EN61010-1,-2-030; EN61010-2-033; EN61326-1, CAT III 600V			



NEW

6000 Counts AC/DC Smart Digital Clamp Meter

HT205A/D/AS/DS

Function	Range	Accuracy			
		HT205A	HT205D	HT205AS	HT205DS
DC Voltage	600mV/6V/60V/600V	±(0.5%+5)	±(0.5%+5)	±(1.0%+5)	±(1.0%+5)
AC Voltage	600mV/6V/60V/600V	±(0.8%+5)	±(0.8%+5)	±(1.0%+5)	±(1.0%+5)
DC Current	60A/600A		±(2.5%+5)		±(2.5%+5)
AC Current	60A/600A	±(2.5%+5)	±(2.5%+5)	±(2.5%+5)	±(2.5%+5)
Resistance	600Ω/6kΩ/60kΩ/600kΩ/6MΩ/60MΩ	±(1.0%+5)	±(1.0%+5)	±(1.0%+5)	±(1.0%+5)
Capacitance	6nF/60nF/600nF/6μF/60μF/600μF/6mF/60mF	±(4.0%+5)	±(4.0%+5)	±(4.0%+5)	±(4.0%+5)
Frequency	100Hz/1000Hz/10kHz/100kHz/1000kHz/10MHz	±(1.0%+3)	±(1.0%+3)	±(1.0%+3)	±(1.0%+3)
Duty	1%~99%	±(3.0%+3)	±(3.0%+3)	±(3.0%+3)	±(3.0%+3)
Temperature (°C/°F)	-40°C~1000°C -40°F~1832°F	±(1.0%+3) ±(1.0%+3)	±(1.0%+3) ±(1.0%+3)	±(1.0%+3) ±(1.0%+3)	±(1.0%+3) ±(1.0%+3)
Continuity	600Ω	✓	✓	✓	✓
Diode		✓	✓	✓	✓
NCV		✓	✓	✓	✓
Live		✓	✓	✓	✓
Counts		6000	6000	6000	6000
Analog bar		✓	✓	✓	✓
Data hold		✓	✓	✓	✓
Max/Min		✓	✓	✓	✓
Backlight		✓	✓	✓	✓
Flashlight		✓	✓	✓	✓
DCA ZERO			✓		✓
SMART(AUTO)		✓	✓	✓	✓
Low battery indication		✓	✓	✓	✓
Auto power off		✓	✓	✓	✓
True RMS		✓	✓	✓	✓
Power		3x1.5V AAA batteries			
Weight		Approx.206g			
Size		199x73x34mm			
Jaw Size		Ø26mmX43mm			
QTY		40pcs			
Safety Rating		EN61010-1,-2-030; EN61010-2-033; EN61326-1, CAT III 600V			



HT206A/B

6000 Counts AC Digital Clamp Meter



Specifications	Range	Accuracy	
		HT206A	HT206B
DC Voltage	400mV/4V/40V/400V/600V	±(0.5%+5)	
	600mV/6V/60V/600V		±(0.5%+5)
AC Voltage	4V/40V/400V/600V	±(1.0%+5)	
	6V/60V/600V/600V		±(0.8%+5)
AC Current	4A/40A/600A	±(2.5%+8)	
	6A/60A/600A		±(2.5%+5)
Resistance	400Ω/4kΩ/40kΩ/400kΩ/4MΩ/40MΩ	±(1.0%+5)	
	600Ω/6kΩ/60kΩ/600kΩ/6MΩ/60MΩ		±(1.0%+5)
Capacitance	4nF/40nF/400nF/4μF/40μF/400μF/4mF	±(4.0%+5)	±(4.0%+5)
	10Hz/100Hz/1kHz/10kHz/100kHz/1MHz/10MHz		±(1.0%+3)
Duty	1%~99%		±(3.0%+3)
Temperature (°C/°F)	-40°C~1000°C		±(1.0%+2)
	-40°F~1832°F		±(1.0%+2)
Counts		4000	6000
Auto/Manual Range		Auto	Auto
Continuity		✓	✓
Diode Test		✓	✓
Data Hold		✓	✓
NCV		✓	✓
Backlight		✓	✓
Flashlight		✓	✓
Low Battery Indication		✓	✓
Auto Power Off		✓	✓
True RMS		✓	✓
LPF		✓	✓
MAX/MIN		✓	✓
Low-z		✓	✓
Weight		Approx. 187g	Approx. 188g
Power	2x1.5V AAA batteries		
Size	193X73X34mm		
Jaw Size	Ø26mmX43mm		
QTY	40pcs		
Safety Rating	EN61010-1,-2-030; EN61010-2-033; EN61326-1, CAT III 600V		



6000 Counts AC/DC Digital Clamp Meter

HT206D

Specifications	Range	Accuracy	
		HT206A	HT206B
DC Voltage	600mV/6V/60V/600V	±(0.5%+5)	
AC Voltage	6V/60V/600V/600V	±(0.8%+5)	
DC Current	60A/600A	±(2.5%+5)	
AC Current	60A/600A	±(2.5%+5)	
Resistance	600Ω/6kΩ/60kΩ/600kΩ/6MΩ/60MΩ	±(1.0%+5)	
Capacitance	10nF/100nF/1000nF/1μF/10μF/100μF/1000μF/10MF/100MF	±(4.0%+5)	
Frequency	100Hz/1kHz/10kHz/100kHz/1MHz/10MHz	±(1.0%+3)	
Duty	1%~99%	±(3.0%+3)	
Temperature (°C/°F)	-40°C~1000°C	±(1.0%+2)	
	-40°F~1832°F	±(1.0%+2)	
Counts		6000 counts	
Auto/Manual Range		Auto	
Continuity		✓	
Diode Test		✓	
Data Hold		✓	
NCV		✓	
Backlight		✓	
Flashlight		✓	
DCA Zero		✓	
Low Battery Indication		✓	
Auto Power Off		✓	
True RMS		✓	
LPF		✓	
MAX/MIN		✓	
Low-z		✓	
Weight	Approx. 190g		
Power	2x1.5V AAA batteries		
Size	193X73X34mm		
Jaw Size	Ø26mmX43mm		
QTY	40pcs		
Safety Rating	EN61010-1,-2-030; EN61010-2-033; EN61326-1, CAT III 600V		



HT207A/B

2000/4000 Counts AC Digital Clamp Meter



Function	Range	Accuracy	
		HT207A	HT207B
DC Voltage	200mV/2V/20V/200V/600V	±(0.5%+5)	
	400mV/4V/40V/400V/600V		±(0.5%+5)
AC Voltage	2V/20V/200V/600V	±(1.0%+5)	
	4V/40V/400V/600V		±(1.0%+5)
AC Current	2A/20A/200A/400A	±(2.5%+5)	
	4A/40A/400A		±(2.5%+5)
Resistance	200Ω/2kΩ/20kΩ/200kΩ/2MΩ/20MΩ	±(1.0%+5)	
	400Ω/4kΩ/40kΩ/400kΩ/4MΩ/40MΩ		±(1.0%+5)
Capacitance	2nF/20nF/200nF/2μF/20μF/200μF/2mF	±(4.0%+5)	
	4nF/40nF/400nF/4μF/40μF/400μF/4mF		±(4.0%+5)
Frequency	10Hz/100Hz/1kHz/10kHz/100kHz/1MHz/10MHz	±(1.0%+3)	
Duty	1%~99%	±(1.0%+3)	
Temperature (°C/°F)	-20°C~1000°C	±(1.0%+2)	
	-4°F~1832°F	±(1.0%+2)	
Counts		2000 counts	4000 counts
Auto/Manual range		Auto	Auto
Continuity		✓	✓
Diode test		✓	✓
Data Hold		✓	✓
NCV			✓
Back light		✓	✓
Flashlight		✓	✓
Low battery indication		✓	✓
Auto power off		✓	✓
True RMS		✓	✓
LPF			✓
MAX/MIN		✓	✓
LowZ			✓
Beep		✓	✓
Power	2x1.5V AAA Batteries		
Weight	Approx. 188g		
Size	193x79x34mm		
Jaw Size	Ø26mmX38mm		
QTY	40pcs		
Safety Rating	EN61010-1,-2-030 EN61010-2-033, EN61326-1 CAT III 600V		



6000 Counts AC/DC Digital Clamp Meter

HT207D

Function	Range	Accuracy	
		HT207A	HT207B
DC Voltage	400mV/4V/40V/400V/600V	±(0.5%+5)	
	4V/40V/400V/600V		±(1.0%+5)
DC Current	40A/400A	±(2.5%+5)	
AC Current	40A/400A	±(2.5%+5)	
Resistance	400Ω/4kΩ/40kΩ/400kΩ/4MΩ/40MΩ	±(1.0%+5)	
Capacitance	4nF/40nF/400nF/4μF/40μF/400μF/4mF	±(4.0%+5)	
Frequency	10Hz/100Hz/1kHz/10kHz/100kHz/1MHz/10MHz	±(1.0%+3)	
Duty	1%~99%	±(1.0%+3)	
Temperature (°C/°F)	-20°C~1000°C	±(1.0%+2)	
	-4°F~1832°F	±(1.0%+2)	
Counts		4000 counts	
Auto/Manual range		Auto	
Continuity		✓	
Diode test		✓	
Data Hold		✓	
NCV		✓	
Back light		✓	
Flashlight		✓	
DCA ZERO		✓	
Low battery indication		✓	
Auto power off		✓	
True RMS		✓	
LPF		✓	
MAX/MIN		✓	
LowZ		✓	
Beep		✓	
Power	2x1.5V AAA Batteries		
Weight	Approx. 190g		
Size	193x79x34mm		
Jaw Size	Ø26mmX38mm		
QTY	40pcs		
Safety Rating	EN61010-1,-2-030 EN61010-2-033, EN61326-1 CAT III 600V		



HT212A/D

2000/4000 Counts AC/DC Digital Clamp Meter



Specifications	Range	Accuracy	
		HT212A	HT212D
DC Voltage	2V/20V/200V/600V	±(0.5%+5)	
	400mV/4V/40V/400V/600V		±(0.5%+5)
AC Voltage	2V/20V/200V/600V	±(1.0%+5)	
	4V/40V/400V/600V		±(0.8%+5)
DC Current	40A/400A	±(2.5%+5)	
AC Current	2A/20A/200A/400A	±(2.5%+5)	
	40A/400A		±(2.5%+5)
Resistance	200Ω/2kΩ/20kΩ/200kΩ/2MΩ/20MΩ	±(1.0%+5)	
	400Ω/4kΩ/40kΩ/400kΩ/4MΩ/40MΩ		±(1.0%+5)
Capacitance	20nF/200nF/2μF/20μF/200μF/2mF	±(4.0%+5)	
	40nF/400nF/4μF/40μF/400μF/4mF		±(4.0%+5)
Frequency	40Hz/400Hz/4kHz/40kHz/400kHz/4MHz	±(1.0%+3)	
Duty	1%~99%	±(3.0%+3)	
Counts		2000 counts	4000 counts
Continuity		✓	✓
Diode Test		✓	✓
Data Hold		✓	✓
Backlight		✓	✓
Flashlight		✓	✓
Low Battery Indication		✓	✓
Auto Power Off		✓	✓
True RMS		✓	✓
Max/Min		✓	✓
NCV		✓	✓
Live		✓	✓
DCA Zero			✓
Weight		Approx. 188g	Approx. 192g
Power	2x1.5V AAA batteries		
Size	195x73x34mm		
Jaw Size	Ø26mmX43mm		
QTY	40pcs		
Safety Rating	EN61010-1,-2-030; EN61010-2-033; EN61326-1, CAT III 600V		



2000 Counts AC Digital Clamp Meter

HT200A/B

Specifications	Range	Accuracy	
		HT200A	HT200B
DC Voltage	200mV/2V/20V/200V/600V	±(0.5%+5)	±(0.5%+5)
AC Voltage	2V/20V/200V/600V	±(1.0%+5)	±(1.0%+5)
AC Current	2A/20A/200A	±(2.5%+8)	±(2.5%+8)
Resistance	200Ω/2kΩ/20kΩ/200kΩ/2MΩ/20MΩ	±(1.0%+5)	±(1.0%+5)
Capacitance	20nF/200nF/2μF/20μF/200μF/2mF		±(4.0%+5)
Counts		2000 Counts	2000 Counts
Continuity		✓(audible and visual alarm)	✓(audible and visual alarm)
Diode test		✓	✓
Data Hold		✓	✓
True RMS		✓	✓
Bicolor Backlight		✓	✓
Low Battery Indication		✓	✓
Auto Power Off		✓	✓
MAX		✓	✓
Power	2x1.5V AAA Batteries		
Weight	Approx. 125g		
Size	164X61X30mm		
Jaw Size	Ø18mmX36mm		
QTY	60pcs		
Safety Rating	EN61010-1,-2-030; EN61010-2-033; EN61326-1, CAT III 600V		



HT200D

2000 Counts AC/DC Digital Clamp Meter



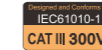
Function	Range	Accuracy
DC Voltage	200mV/2V/20V/200V/600V	±(0.5%+5)
AC Voltage	2V/20V/200V/600V	±(1.0%+5)
DC Current	20A/200A	±(2.5%+5)
AC Current	20A/200A	±(2.5%+5)
Resistance	200Ω/2kΩ/20kΩ/200kΩ/2MΩ/20MΩ	±(1.0%+5)
Capacitance	2nF/20nF/200nF/2μF/20μF/200μF/2mF/20mF	±(4.0%+5)
Frequency	2Hz/20Hz/200Hz/2kHz/20kHz/200kHz/2MHz/20MHz	±(1.0%+3)
Counts		2000 counts
Auto/Manual range		Auto
Continuity		✓
Diode test		✓
Data Hold		✓
NCV		✓
Backlight		✓
DCA ZERO		✓
Low battery indication		✓
Auto power off		✓
True RMS		✓
Maximum measurement		✓
Beep		✓
Power	2x1.5V AAA Batteries	
Weight	Approx. 115g	
Size	176x61x31mm	
Jaw Size	Ø16mm	
QTY	60pcs	
Safety Rating	EN61010-1,-2-030 EN61010-2-033, EN61326-1 CAT III 600V	



Voltage Tester

HT86A

Specifications	Range	Resolution	Accuracy
DC Voltage	2.000V/20.00V/100V (>110V or OL)	0.001V/0.01V/0.1V	±(1.0%+5)
Resistance	2000Ω/20.00kΩ/200.0kΩ/2.000MΩ/20.00MΩ	1Ω/0.01kΩ/0.1kΩ/0.001MΩ/0.01MΩ	±(1.2%+5)
Display	LCD		
Continuity	<50Ω buzzer		
Auto Power Off	✓		
Low Battery Indication	✓		
Backlight	✓		
Flashlight	✓		
Buzzer Alert	✓		
Power	1x1.5V AAA batteries		
Weight	Approx. 75g		
Size	175x25x26mm		
QTY	100pcs		
Safety Rating	EN61010-1-2-030, EN61010-2-033, CATIII 300V		



Voltage Tester

HT86B

Specifications	Range	Resolution	Accuracy
DC Voltage	2.000V/20.00V/200.0V/300V	0.001V/0.01V/0.1V/1V	±(1.0%+5)
AC Voltage	2.000V/20.00V/200.0V/300V	0.001V/0.01V/0.1V/1V	±(1.0%+5)
Resistance	2000Ω/20.00kΩ/200.0kΩ/2.000MΩ/20.00MΩ	1Ω/0.01kΩ/0.1kΩ/0.001MΩ/0.01MΩ	±(1.2%+5)
Continuity	<50Ω buzzer		
Display	LCD		
Auto Power Off	✓		
Low Battery Indication	✓		
Backlight	✓		
Flashlight	✓		
Buzzer Alert	✓		
Power	1x1.5V AAA batteries		
Weight	Approx. 68g		
Size	175x25x26mm		
QTY	100pcs		
Safety Rating	EN61010-1,-2-030 EN61010-2-033, CATIII 300V		



HT89/A/C/E/F

Voltage Tester

NEW



HT89A



HT89C



HT89E



HT89F

Specifications

Display	LCD display
Range of Voltage Detection	AC12~300V;
Connect Detection	✓
Battery Positive Detection	✓
NCV	✓
Alarm Mode	Sound and light alarm
Probe Shape	Prolate shape
Backlight	Red and green double color backlight
Live And Neutral	According to LCD's display
Signal Intensity Display	LCD display
Signal Intensity Indication Method	sound from slow to fast; backlight from green to red; LCD data from small to big
Flashlight	✓
Auto Power Off	No operation, no sensing signal will shut down automatically in about 5 minutes.
Low-Battery Indication	✓
Power Supply	1x1.5V AAA batteries
Weight	Approx.36.2g
Size	147X23X26mm
QTY	200pcs
Safety rating	EN61010-1-2-030, EN61326-1, CAT II 300V



HT89



NEW

Phase/Voltage Tester 400V

HT91A/AP

Function	HT91A	91AP
Display	LCD display	
Probe shape	Slotted screws/ Phillips screws	
Backlight	Red and green double color backlight	
Live and Neutral	According to LCD's display	
Alarm mode	Sound and light alarm	
NCV	✓	
Connectivity	✓	
Flashlight	✓	
Low-battery indication	✓	
Auto power off	No operation, no sensing signal will shut down automatically in about 5 minutes.	
Range of voltage detection	12-400V	12-400V
Data hold	X	X
Phase measurement		✓
Positive Measurement	✓	
Power Supply	1x1.5V AAA batteries	
Weight	Approx.47g	
Size	171X27X28mm	
QTY	200pcs	
Safety rating	EN61010-1,-2-030; EN61326-1, CAT II 300V	



NEW

Phase / Voltage Tester & Read date

HT91D+/DP

Function	HT91D+	HT91DP
Display	LCD display	
Probe shape	Slotted screws/Phillips screws	
Backlight	Red and green double color backlight	
Live and Neutral	According to LCD's display	
Alarm mode	Sound and light alarm	
NCV	✓	
Connectivity	✓	
Flashlight	✓	
Low-battery indication	✓	
Auto power off	No operation, no sensing signal will shut down automatically in about 5 minutes.	
Range of voltage detection	12-300V	12-300V
Data record	✓	
Phase measurement		✓
Positive Measurement	✓	
Power Supply	1x1.5V AAA batteries	
Weight	Approx.47g	
Size	171X27X28mm	
QTY	200pcs	
Safety rating	EN61010-1,-2-030; EN61326-1, CAT II 300V	



HT91C+/CP

Phase / Voltage Tester & Read date

NEW



Function	HT91C+	HT91CP
Display	LCD display	
Probe shape	Slotted screws/Phillips screws	
Backlight	Red and green double color backlight	
Live and Neutral	According to LCD's display	
Alarm mode	Sound and light alarm	
NCV	✓	
Connectivity	✓	
Flashlight	✓	
Low-battery indication	✓	
Auto power off	No operation, no sensing signal will shut down automatically in about 5 minutes.	
Range of voltage detection	12-300V	12-300V
Data record	✓	
Phase measurement		✓
Positive Measurement	✓	
Power Supply	1x1.5V AAA batteries	
Weight	Approx.47g	
Size	171X27X28mm	
QTY	200pcs	
Safety rating	EN61010-1,-2-030; EN61326-1, CAT II 300V	



HT91E+/EP

Voltage Tester & Read date

NEW



Function	HT91E+	HT91EP
Display	LCD display	
Probe shape	Slotted screws/Phillips screws	
Backlight	Red and green double color backlight	
Live and Neutral	According to LCD's display	
Alarm mode	Sound and light alarm	
NCV	✓	
Connectivity	✓	
Flashlight	✓	
Low-battery indication	✓	
Auto power off	No operation, no sensing signal will shut down automatically in about 5 minutes.	
Range of voltage detection	12-300V	12-300V
Data record	✓	
Phase measurement		✓
Positive Measurement	✓	
Power Supply	1x1.5V AAA batteries	
Weight	Approx.47g	
Size	171X27X28mm	
QTY	200pcs	
Safety rating	EN61010-1,-2-030; EN61326-1, CAT II 300V	



NEW

Voltage Tester

HT92/92A

Function	HT92/92A
Display	LCD display
Range of voltage detection	AC/DC12~300V;
Alarm mode	Sound and light alarm
Probe shape	Prolate shape
Backlight	Red and green double color backlight
Live and Neutral	According to LCD's display
Signal intensity display	LCD display
Signal intensity indication method	sound from slow to fast; backlight from green to red; LCD data from small to big
Flashlight	✓
Auto power off	No operation, no sensing signal will shut down automatically in about 5 minutes.
Low-battery indication	✓
Power Supply	2x1.5V AAA batteries
Weight	
Size	183x28x28mm
QTY	80pcs
Safety rating	EN61010-1,-2-030; EN61326-1, CAT II 300V



Non-contact Voltage Detector

HT90

Specifications	
Display	LED
Range Of Voltage Detection	High sensitivity: AC12~1000V; Low sensitivity: AC48~1000V
Frequency	50/60Hz
Alarm Mode	Sound and Light alarm
Probe Shape	Oblate shape
Live And Neutral	According Signal strength indication, the test signal on the fire line is stronger than Neutral's
Signal Intensity Display	Three level sensitivity of LED
Signal Intensity Indication Method	Sound from slow to fast; LED from low to high
Flashlight	✓
Auto Power Off	No operation, no sensing signal will shut down automatically in about 5 minutes.
Low-Battery Indication	✓
Power Supply	2x1.5V AAA batteries
Weight	Approx.31 g
Size	145X24X28mm
QTY	200pcs
Safety Rating	EN61010-1-2-030, EN61326-1, CAT III 1000V



HT100

Non-contact Voltage Detector



Specifications	
Display	LCD
Range Of Voltage Detection	High sensitivity : AC12~1000V ; Low sensitivity : AC48~1000V
Frequency	50/60Hz
Alarm Mode	Sound and Light alarm
Probe Shape	Oblate shape
Backlight	Red and green double color backlight
Live And Neutral	According to backlight color change: green is neutral wire; red is live wire.
Signal Intensity Display	Four level sensitivity of bargraph
Signal Intensity Indication Method	Sound from slow to fast ; backlight from green to red ; bargraph from low to high
Flashlight	✓
Auto Power Off	No operation, no sensing signal will shut down automatically in about 5minutes.
Low-Battery Indication	✓
Power Supply	2x1.5V AAA batteries
Weight	Approx. 32g
Size	157 x 27 x 23mm
QTY	200pcs
Safety rating	EN61010-1-2-030, EN61326-1, CAT III 1000V



HT100P

Non-contact Voltage/ Phase Detector



Specifications	
Display	LCD
Range of voltage detection	High sensitivity: AC12~1000V; Low sensitivity: AC48~1000V
frequency	50/60Hz
Alarm mode	Sound and Light alarm
Non-contact Phase detector	✓
Probe shape	Oblate shape
Backlight	Red and green double color backlight
Live and Neutral	According to backlight color change: green is neutral wire; red is live wire.
Signal intensity display	Four level sensitivity of bargraph
Signal intensity indication method	Sound from slow to fast; backlight from green to red; bargraph from low to high
Flashlight	✓
Auto power off	No operation, no sensing signal will shut down automatically in about 5 minutes.
Low-battery indication	✓
Power Supply	2x1.5V AAA batteries
Weight	Approx. 32g
Size	157 x 27 x 23mm
QTY	200pcs
Safety rating	EN61010-1-2-030, EN61326-1, CAT III 1000V



Non-contact Voltage Detector

HT101

Specifications	
Display	LCD
Range Of Voltage Detection	High sensitivity: AC12~1000V ; Low sensitivity: AC48~1000V
Frequency	50/60Hz
Alarm Mode	Sound and Light alarm
Probe Shape	Oblate shape
Backlight	Red and green double color backlight
Live And Neutral	According to backlight color change: green is neutral wire; red is live wire.
Signal Intensity Display	Four level sensitivity of bargraph
Signal Intensity Indication Method	Sound from slow to fast ; backlight from green to red ; bargraph from low to high
Flashlight	✓
Auto Power Off	No operation, no sensing signal will shut down automatically in about 5 minutes.
Low-Battery Indication	✓
Power Supply	2x1.5V AAA batteries
Weight	Approx. 32g
Size	157 x 27 x 24mm
QTY	200pcs
Safety Rating	EN61010-1-2-030, EN61326-1, CAT III 1000V



Non-contact Voltage Detector

HT103

Specifications	
Display	LCD
Range Of Voltage Detection	Highsensitivity: AC12~1000V; Low sensitivity: AC70~1000V
Frequency	50/60Hz
Alarm Mode	Sound and Light alarm
Probe Shape	Oblate shape
Backlight	Red and green double color backlight
Live And Neutral	Judging by the numerical percentage of LCD display, the bigger is the fire line, the smaller is the zero line
Signal Intensity Display	Numerical percentage+analog strip
Signal Intensity Indication Method	Sound from slow to fast ; backlight from green to red ; bargraph from low to high; percentage from small to big
Flashlight	✓
Auto Power Off	No operation, no sensing signal will shut down automatically in about 5 minutes.
Low-Battery Indication	✓
Waterproof Grade	IP66
Power Supply	2x1.5V AAA batteries
Weight	Approx.41g
Size	156x30x24mm
QTY	200pcs
Safety Rating	EN61010-1-2-030, EN61326-1, CAT III 1000V



HT106

Socket Tester With Voltage test & RCD/ GFCI



HT106A

HT106B

HT106D



HT106E

HT106F

HT106T

Specifications	HT106A	HT106B	HT106D	HT106E	HT106F	HT106T
Voltage range	48V~250V					
GFCI test		>5mA				
RCD test	>30mA		>30mA	>30mA	>30mA	>30mA
Voltage measurement (48V~250V/45~65Hz)	✓	✓	✓	✓	✓	✓
LCD display	✓	✓	✓	✓	✓	✓
Backlight	✓	✓	✓	✓	✓	✓
Weight	Approx.50g	Approx.52g	Approx.59g	Approx.63g	Approx.50g	Approx.52g
Size	65X62X57mm	65X62X56mm	65X62X63mm	65X62X58mm	65X62X63mm	65X62X56mm
Socket connection detection	Correct connection					
	Open ground					
	Open neutral					
	Open live					
	Live wire and ground wire reverse					
	Live wire and neutral wire reverse					
QTY	80pcs					
	Safety rating					
Safety rating	EN61010-1-2-030, EN61326-1, CAT II 300V					

Socket Tester With Voltage test & RCD/ GFCI

HT107



HT107A

HT107B

HT107D



HT107E

HT107F

HT107T

Specifications	HT107A	HT107B	HT107D	HT107E	HT107F	HT107T
Voltage range	AC 90~250V					
GFCI test		>5mA				
RCD test	>30mA		>30mA	>30mA	>30mA	>30mA
Voltage measurement (90V~250V)	✓	✓	✓	✓	✓	✓
Frequency measurement (45~65Hz)	✓	✓	✓	✓	✓	✓
Leakage voltage measurement (0V~99V)	✓	✓	✓	✓	✓	✓
LCD display	✓	✓	✓	✓	✓	✓
Two color backlight	✓	✓	✓	✓	✓	✓
Weight	Approx.64g	Approx.64g	Approx.72g	Approx.75g	Approx.64g	Approx.64g
Size	68X65X63mm	68X65X62mm	68X65X69mm	68X65X64mm	68X65X63mm	68X65X62mm
Socket connection detection	Correct connection					
	Open ground					
	Open neutral					
	Open live					
	Live wire and ground wire reverse					
	Live wire and neutral wire reverse					
QTY	80pcs					
	Safety rating					
Safety rating	EN61010-1-2-030, EN61326-1, CAT II 300V					

HT97

Socket Tester With Voltage test & RCD/ GFCI



Specifications	HT97A	HT97B	HT97D	HT97E	HT97F	HT97T
Voltage range	AC 30~260V/45~65Hz, ±(3.0%+2)					
Leakage voltage range	0~99V/45~65Hz, ±(2.0%+2)					
Trip time test	10-1000mS, ±(2.0%+4)					
GFCI test		>5mA				
RCD test	>30mA		>30mA	>30mA	>30mA	>30mA
Voltage measurement (48V~250V/45~65Hz)	✓	✓	✓	✓	✓	✓
LCD display	✓	✓	✓	✓	✓	✓
Backlight	✓	✓	✓	✓	✓	✓
Socket connection detection	1. Correct connection					
	2. Open ground					
	3. Open neutral					
	4. Open live					
	5. Live wire and ground wire reverse					
	6. Live wire and neutral wire reverse					
	7. Live wire and ground wire reverse, missing ground wire					
Weight	Approx.95g	Approx.95g	Approx.103g	Approx.106g	Approx.95g	Approx.95g
Size	68X65X61mm	68X65X61mm	68X65X74mm	67X65X63mm	67X65X64mm	67X65X61mm
QTY	80pcs					
Safety rating	EN61010-1,-2-030; EN61326-1, CAT II 300V					

Infrared Thermometer

HT641A/B/A+/B+

Specifications	HT641A	HT641B	HT641A+	HT641B+
IRT Temperature	-50°C~400°C (-58°F~752°F)	-50°C~600°C (-58°F~1112°F)	-50°C~400°C (-58°F~752°F)	-50°C~600°C (-58°F~1112°F)
	-50°C~0°C (-58°F~32°F): ±3°C 0°C~600°C (32°F~1112°F): ± 2.0%/±2°C			
Display	Black and white screen		Color Screen	
Laser	<1mW(630nm~670nm) indication			
D:S	12: 1			
Emissivity	0.10~1.00			
Spectral Response	8~14um			
Response Time	<0.5 S			
°C/°F Display	✓		✓	
Temperature Upper / Lower Limit Alarm (Red Led)	✓		✓	
Data Hold	✓		✓	
Max Measurement	✓		✓	
Low Battery Indication	✓		✓	
Auto Power Off	✓		✓	
Back Light Control	✓			
Laser Light Control	✓		✓	
Power	2x1.5V AAA batteries			
Weight	Approx.96g			
Size	147X96X39mm			
QTY	40pcs			
Safety Rating	EN61326-1, EN60825-1			



HT650A/B

Infrared Thermometer



Specifications	HT650A	HT650B
IRT Temperature	-30°C~380°C (-220°F~716°F)	-30°C~550°C (-220°F~1022°F)
	-50°C~0°C (-220°F~32°F): ±3°C	
	0°C~550°C (-22°F~1022°F): ±1.5% or ±2°C	
Display	✓	
Laser	✓	
D:S	12: 1	
Emissivity	0.10~1.00	0.10~1.0
Spectral Response	8~14um	
°C/°F Display	✓	✓
Response Time	<0.5S	
Temperature Upper / Lower Limit Alarm (Red)	✓	✓
Data Hold	✓	✓
Max	✓	✓
Low Battery Indication	✓	✓
Auto Power Off	✓	✓
Back Light	✓	✓
Power	2x1.5V AAA batteries	
Weight	Approx. 113g	
Size	148X102X46mm	
QTY	40pcs	
Safety Rating	EN61326-1, EN60825-1	



Infrared Thermometer With Ambient Temperature & Humidity

HT650C

Specifications	
IRT Temperature	-30°C~550°C (-22°F~1022°F)
	-30°C~0°C (-22°F~32°F): ±3°C
	0°C~550°C (-32°F~1022°F): ±2% or ±2°C
Ambient Temperature	-10°C~60°C (14°F~140°F)
Relative Humidity	±1.5°C/3°F 0%~100%RH ±5%RH
Display	✓
Laser	✓
D:S	12: 1
Emissivity	0.10~1.00
Spectral Response	8~14um
°C/°F Display	✓
Response Time	<0.5S
Temperature Upper / Lower Limit Alarm (Red)	✓
Data Hold	✓
Max	✓
Low Battery Indication	✓
Auto Power Off	✓
Back Light	✓
Power	2x1.5V AAA batteries
Weight	Approx. 113g
Size	148X102X46mm
QTY	40pcs
Safety Rating	EN61326-1, EN60825-1



HT651A/D

Infrared Thermometer With Ambient Temperature & Humidity & Dew Point



Specifications	HT651A	HT651D
IRT Temperature	-50°C~800°C (-58°F~1472°F)	-50°C~800°C (-58°F~1472°F)
	-50°C~0°C (-58°F~32°F): ±3°C 0°C~800°C (32°F~1472°F): ±2% or ±2°C	
K Type Thermocouple		-50~500°C(-58~932°F) ±2.0°C
Ambient Temperature	-10°C~60°C (14°F~140°F) ±1.5°C /3°F	-10°C~60°C (14°F~140°F) ±1.5°C /3°F
Relative Humidity	0%~100%RH ±5%RH	0%~100%RH ±5%RH
Dew Point Temperature	-10°C~50°C (14°F~122°F) ±1.5°C /3°F	-10°C~50°C (14°F~122°F) ±1.5°C /3°F
Display	Color LCD	
Laser	<1mW(630nm~670nm) 12 point circular measurement area indication	
D:S	12: 1	
Emissivity	0.10~1.00	
Spectral Response	8~14um	
Response Time	<0.5S	
°C/°F Display	✓	✓
Temperature Upper / Lower Limit Alarm	✓	✓
Temperature Difference Alarm Between Infrared Temperature And Ambient Temperature		✓
Temperature Difference Alarm Between Infrared Temperature And Dew Point Temperature		✓
Temperature Difference Alarm Between Infrared Temperature And Thermocouple Temperature		✓
Data Hold	✓	✓
Low Battery Indication	✓	✓
Auto Power Off	✓	✓
Uv Light	✓	✓
Laser	✓	✓
Beep	✓	✓
Power	9V battery	
Weight	Approx.160g	
Size	165x112x48mm	
QTY	40pcs	
Safety Rating	EN61326-1, EN60825-1	

Body Infrared Thermometer

HT658

Specifications		
Measurement Range	Body mode: 32.0°C~42.9°C(89.6°F~109.2°F)	✓
	Surface mode: 0.0~100.0°C(32.0~212.0°F)	✓
Accuracy	Body mode: ±0.2°C	✓
	Surface mode: ±2.0°C	✓
Resolution	0.1°C/0.1°F	✓
Unit	°C/°F	✓
Measuring Distance	3~5cm	✓
Data Hold		✓
Body Temperature Alarm	can be adjusted and default 37.3°C	✓
Backlight	Two-color (yellow and white)	✓
Beep		✓
Low Battery Indication		✓
Auto Power Off		✓
Power	2x1.5V AAA batteries	
Weight	Approx. 72g	
Size	142x41x62mm	
QTY	50pcs	
Safety Rating	EN61326-1, EN60825-1	



HT670/HT671

Digital Tachometer

NEW



HT670/HT671 Digital Tachometer			
Function	Range	Accuracy	
		HT670	HT671
Non-contact RPM	99999RPM	±(0.05%+1)	±(0.05%+1)
Contact RPM	20000 RPM	x	±(0.05%+1)
Contact Linear Speed (inch/min)	99999inch/min	x	±(0.05%+1)
Contact Linear Speed (ft/min)	6560ft/min	x	±(0.05%+1)
Contact Linear Speed (m/min)	0~1999.9m/min	x	±(0.05%+1)
Count	99999R	√	x
Maximum Count	99999 Count		99999 Count
Auto/Manual Range	Auto		Auto
Display	LCD		LCD
Analog Bar	√		x
High/Low Threshold Setting	√		√
Threshold Alarm	√(Audio Alarm and Visual Alarm)		√(Audio Alarm)
Maximum/Minimum/Average Value Measurement	√		√
Data Hold	√		√
Low Battery indicator	√		√
Automatic Power-off	√		√
PC Software	x		√
Dual-Cool Backlight	√		x
Power Supply	3x1.5 V AAA batteries		700mAh lithium battery
Accessories	x		Contact Line Speed Accessory *1 Contact RPM Accessory, Cylindrical *1 Contact RPM Accessory, Large Conical *1 Contact RPM Accessory, Small Conical *1
Weight	Approx.140g		Approx.140g
Dimensions	142x58x27.5mm		184x60x33mm
QTY	50Pcs		
Safety Rating	EN61326-1		



NEW

Digital Refractometer

HT5100

Function	Specification
Brix/Refractive measurement	√
Temperature measurement	√
Automatic temperature compensation	√
Continuous measurement	√
Zeroing function	√
Auto power-off	√
Backlight	√
Low battery indicator	√
Backlight color change	√
Sugar concentration measurement range	0-50%
Resolution	0.1%
Accuracy	±0.5%
Power	4.5V
Size	130x65.5x33mm



HT5101

Salinity Meter



Function	Specification
Screen Size	32*12mm
Backlight	✓
Salt concentration measurement	✓
TDS measurement	✓
Unit switch	✓
Temperature Measurement	✓
ATC	✓
Calibration	✓
Vibration alert	✓
Salt concentration measurement range	✓
TDS measurement	✓
Resolution	Salt Concentration (%) 1% to 5%: ±0.01% 5% to 10%: ±0.05% 10% to 15%: ±0.1% 15% to 25%: ±0.5% TDS (ppt/ppm) Resolution of 0.01 for 0.00 to 10.00 ppt Resolution of 0.1 for 10.1 to 70.0 ppt
Accuracy	Salt Concentration (%) 0% to 1.99%: ±0.1% 2% to 4.99%: ±0.2% 5% to 9.99%: ±0.5% 10% to 14.99%: ±1% 15% to 25%: ±2% TDS (ppt/ppm) Accuracy: ±1% of full scale + 1 digit (when reading is between 10.1 to 70 ppt) Accuracy: ±2% of full scale + 1 digit (when reading is outside the 10.1 to 70 ppt range)
Spoon-shaped tools	✓
Battery	2x1.5 V AAA batteries
Size	207.5x26x26mm
Weight	85g

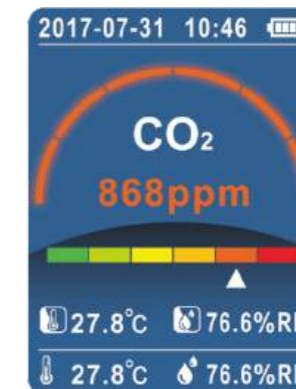
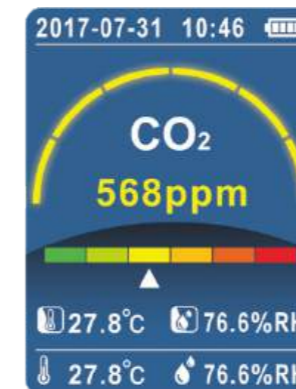
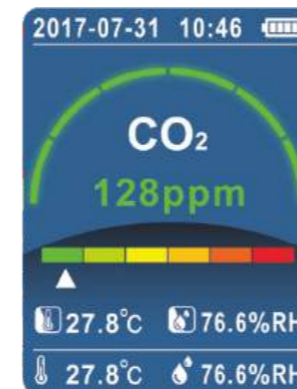


CO2 Recorder

HT600

Smart Indoor Environment Air Quality Tester

Items	Measuring range	Resolution ratio	Accuracy
CO ₂	0~20000 ppm	1 ppm	0~10000ppm (±50ppm±3% Of reading) 10000~20000ppm (±200ppm±10% Of reading)
CO ₂ %	0-2.000%	0.001%	0-1.000% (±0.005%±3% Of reading) 1.000%~2.000% (±0.020%±10% Of reading)
Temperature °C/°F	°C: -20°C ~ +125°C °F: -4°F ~ +257°F	0.1°C / 0.1°F	±1.0°C ±2.0°F
Humidity%RH	0 ~ 100%RH	1 %RH	±5%
Dew TEMP °C/°F	°C: -20°C ~ +60°C °F: -4°F ~ +140°F	0.1°C / 0.1°F	±1.0°C ±2.0°F
WetBulb TEMP °C/°F	°C: -5°C ~ +60°C °F: 23°F ~ +140°F	0.1°C / 0.1°F	±1.0°C ±2.0°F
Data Store	80000 groups(1 page/group)		



HT610

Environment Air Quality Tester



Outdoor Environment Air Quality Tester (Haze Meter)

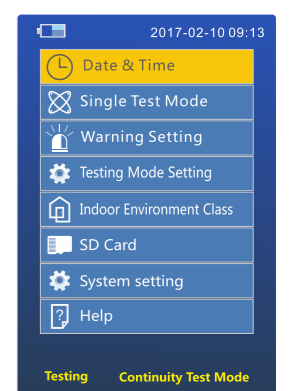
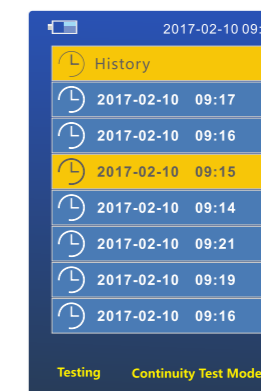
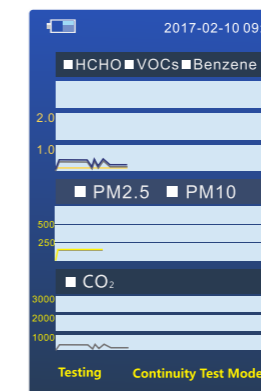
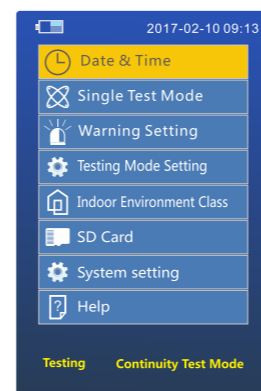
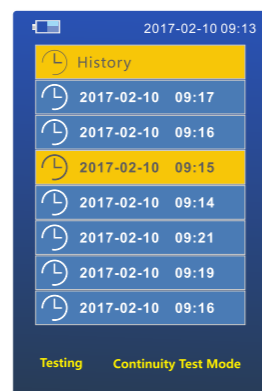
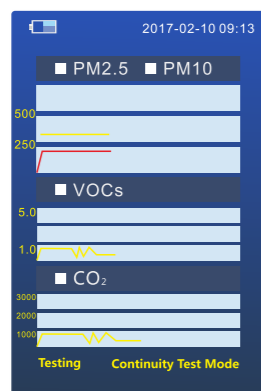
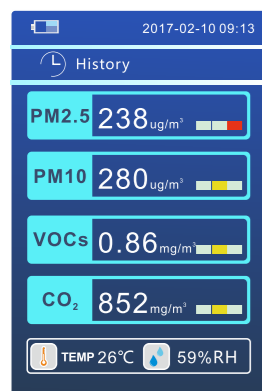
SPECIFICATIONS	Measuring range	Resolving power	Accuracy
PM2.5	0-999ug/m3	1.0ug/m3	±10%
PM10	0-999ug/m3	1.0ug/m3	±10%
VOCs	0-9.99mg/m3	0.01mg/m3	±10%
CO ₂	0-3000ppm	1ppm	3%
Temperature	-10°C--50°C	1°C	±1.5°C
Humidity	0-100%	1%	5%

Environment Air Quality Tester

HT612

Multi-Function Indoor Environment Air Quality Tester

SPECIFICATIONS	Measuring range	Resolving power	Accuracy
PM2.5	0-999ug/m3	1.0ug/m3	±10%
PM10	0-999ug/m3	1.0ug/m3	±10%
HCHO	0-3.0mg/m3	0.01mg/m3	±10%
VOCs	0-9.99mg/m3	0.01mg/m3	±10%
Benzene	0-9.99mg/m3	0.01mg/m3	±10%
CO ₂	0-3000ppm	1ppm	3%
Temperature	-10°C--50°C	1°C	±1.5°C
Humidity	0-100%	1%	5%



HT59

Gas Leak Detector



Specifications	
Combustible Gas Detection	50~1000ppm
Accuracy	±30%
Display	LED
Auto Power Off	✓
Low Battery Indication	✓
Buzzer Alert	✓
Power	2x1.5V AAA batteries
Weight	Approx.33.3g
Size	158X24X28mm
QTY	200pcs
Safety Rating	EN61326-1



HT59A

Gas Leak Detector



Specifications	
Combustible Gas Detection	50~1000ppm
Accuracy	±30%
Display	LED
Auto Power Off	✓
Low Battery Indication	✓
Two-Colour Backlight	✓
Buzzer Alert	✓
Power	2x1.5V AAA batteries
Weight	Approx.35g
Size	170X23X28mm
QTY	200pcs
Safety Rating	EN61326-1



Gas Leak Detector

HT60



Specifications	
Combustible Gas Detection	50~1000ppm
Accuracy	±30%
Display	LCD
Auto Power Off	✓
Low Battery Indication	✓
Two-Colour Backlight	✓
Buzzer Alert	✓
Power	2x1.5V AAA batteries
Weight	Approx.35g
Size	170X23X28mm
QTY	200pcs
Safety Rating	EN61326-1



Gas Leak Detector

HT61



Specifications	
Range	50 ~ 1000ppm
Detecting Gas	combustible gas
Accuracy	≤10% FS(methane)
Sensitivity	<50ppm(methane)
Response Time	≤500ppm Approx.5sec >500ppm Approx.2sec
Warm-Up Time	Approx. 30 sec
Display	LCD
Alarm Mode	Visible, audible
Auto Zero	✓
Auto Power Off	✓
Low Battery Indication	✓
Power	2 x1.5V AAA batteries
Weight	Approx. 46g
Size	180X32X31mm
QTY	80pcs
Safety Rating	EN61326-1



HT61L

Gas Leak Detector



Specifications	
Combustible Gas Detection	100~5000ppm
Accuracy	±30%
Display	LCD
Auto Power Off	✓
Low Battery Indication	✓
Buzzer Alert	✓
Power	2x1.5V AAA batteries
Weight	Approx.65g
Size	158X24X28mm
QTY	200pcs
Safety Rating	EN61326-1



Gas Leak Detector

HT56



Specifications	
Combustible Gas Detection	100~5000ppm
Accuracy	±30%
Display	LCD
Auto Power Off	✓
Low Battery Indication	✓
Two-Colour Backlight	✓
Buzzer Alert	✓
Power	2x1.5V AAA batteries
Weight	Approx.35g
Size	170X23X28mm
QTY	200pcs
Safety Rating	EN61326-1



HT66

Gas Leak Detector



Specifications	
Range	50 ~ 1000ppm
Detecting Gas	combustible gas
Accuracy	≤10% FS(methane)
Sensitivity	<50ppm(methane)
Response Time	≤500ppm Approx.5sec >500ppm Approx.2sec
Warm-Up Time	Approx. 30 sec
Display	LED
Alarm Mode	Visible, audible
Auto Zero	X
Auto Power Off	✓
Low Battery Indication	✓
Power	2 x1.5V AAA batteries
Weight	Approx. 53g
Size	318x41x28mm
QTY	80pcs
Safety Rating	EN61326-1



Gas Leak Detector

HT56pro



Specifications	
Range	100~5000ppm
Detecting Gas	combustible gas
Accuracy	≤10% FS(methane)
Sensitivity	< 100ppm(methane)
Response Time	≤500ppm Approx.5sec >500ppm Approx.2sec
Warm-Up Time	Approx. 30 sec
Display	LCD
Alarm Mode	Visible, audible
Auto Zero	✓
Auto Power Off	✓
Low Battery Indication	✓
Power	2 x1.5V AAA batteries
Weight	Approx. 46g
Size	180X32X31mm
QTY	80pcs
Safety Rating	EN61326-1



HT58pro

Gas Leak Detector



Specifications	Range	Resolution	Basic accuracy
Combustible gas detection	1~20%LEL (100~10000ppm)	1%LEL	±30%
Display	LCD		
Alarm mode	And backlight alarm		
Signal intensity display	Level 20 analog bar+ value percentage		
Signal intensity indication method	sound from slow to fast: The screen changes from green to red		
Auto Power Off	No operation, no sensing signal will shut down automatically in about 5 minutes.		
Flash Light	✓		
Low battery indication	✓		
Trichromatic backlight	✓		
Buzzer alert	✓		
Charging function	✓		
Power	3.7V Lithium batteries		
Weight	Approx.131.5g		
Size	121x56x27mm		
QTY	50pcs		
Safety Rating	EN61326-1		

HT608

Gas Leak Detector



Specifications	Range	resolution	Basic accuracy
Combustible gas detection	0~20%LEL(0~9999ppm)	1%LEL	±1%
Display	LCD		
Alarm mode	Sound and light alarm		
Signal intensity display	Level 20 analog bar+ value percentage		
Signal intensity indication method	sound from slow to fast.		
Auto Power Off	No operation, no sensing signal will shut down automatically in about 5 minutes.		
FLASH LIGHT	✓		
Low battery indication	✓		
Buzzer alert	✓		
Charging function	✓		
Power	3.7V Lithium batteries		

Gasoline Butane Gas Fuel Propane Ethanol Alcohol

Gas Leak Detector

HT609/609pro

Specifications	Range	Resolution	Accuracy
Combustible Gas Detection	50~1000ppm	100PPM	±30%
Temperature Detection	-20.0°C ~ 60.0°C(-4.0°F~140.0°F)	0.1	0.0°C ~ 45.0°C(32°F ~113°F) : ±2.0°C/4.0°F Other: ±3.0°C/6.0°F
Humidity Detection	0.0% ~99.9%RH	0.1	20%~ 80%: ±5.0RH Other: ±6.0RH
Display	LCD		
Auto Power Off	✓		
Low Battery Indication	✓		
Trichromatic Backlight	✓		
Buzzer Alert	✓		
Power	3x1.5V AAA batteries		
Weight	Approx.115g		
Size	142X58X28mm		
QTY	50pcs		
Safety Rating	EN61326-1		



Explosion Fire Dizziness

HT601

Gas Leak Detector

NEW



HT601A+

HT601A+PRO

HT601B+

HT601B+PRO

Specifications	HT601A	HT601A+	HT601A+PRO	HT601B	HT601B+	HT601B+PRO
Range	50-1000PPM			0~9999ppm /0.00~20.00%LEL		
Detecting gas	combustible gas					
Accuracy	±30%			≤10% FS(methane)		
Sensitivity	> 50ppm(methane)					
Response Time	<2 sec					
Warm-Up Time	Approx. 30 sec					
Display	Bargraph			Digit with Bargraph		
Alarm Mode	Visible, audible					
Auto/Manual Zero	Auto Zero			Auto or Manual Zero		
Auto Power Off	✓	✓	✓	✓	✓	✓
Low Battery Indication	✓	✓	✓	✓	✓	✓
Flexible Probe	Approx.16"inch					
Power	3x1.5V AAA batteries	3.7V Li-ion battery		3x1.5V AAA batteries	3.7V Li-ion battery	
Charge		✓ (DC 5V 1A)			✓ (DC 5V 1A)	
Weight	Approx.231g			Approx.248g		
Size	596X60X33mm					
QTY	40pcs					
Safety Rating	EN61326-1					

NEW

Carbon Monoxide Detector

HT621/HT621+

Specifications	Range	resolution	Basic accuracy
Combustible gas detection	0~5000ppm	1ppm	0~200ppm(±20ppm) 200~2000ppm(±10%) 2000~5000ppm(±20%)
Temperature detection	-20.0°C ~ 60.0°C (-4.0°F~140.0°F)	0.1	0.0°C ~ 45.0°C(32°F ~113°F) ±2.0°C/4.0°F Other: ±3.0°C/6.0°F
Display	LCD		
Power down storage	✓		
Auto Power Off	✓		
Low battery indication	✓		
Two-color backlight	✓		
Buzzer alert	✓		
Power	3x1.5V AAA batteries /3.7V Li-ion battery		
Weight	Approx.113g		
Size	171x60x33mm		
QTY	50pcs		
Safety Rating	EN61326-1		



WHAT ARE THE DANGERS OF CARBON MONOXIDE?

- Carbon Monoxide Is A Colorless, Odorless, Non-Irritating Gas That May Explode When Mixed With Air (The Limit Is 12.5%~74.2%).
- Carbon Monoxide Is Easily Combined With Hemoglobin To Form Carboxyhemoglobin, Which Makes Hemoglobin Lose Its Ability And Function To Carry Oxygen, Causing Tissue Asphyxia And Death In Severe Cases.
- Carbon Monoxide Has A Toxic Effect On Tissue Cells Throughout The Body, Especially The Cerebral Cortex.



Difficulty Breathing



Nausea



Dizziness Headache

HT6019

Carbon Monoxide Detector



Specifications	Range	resolution	Basic accuracy
Combustible gas detection	0~5000ppm	1PPM	0~200ppm(±20ppm) 200~2000ppm(±10%) 2000~5000ppm(±20%)
Display	LCD		
Alarm mode	Sound and light alarm		
Signal intensity display	Analog bar+ value		
Signal intensity indication method	And backlight from green to orange to red		
Auto Power Off	No operation will shut down automatically in about 10 minutes.		
FLASH LIGHT	x		
Low battery indication	✓		
Buzzer alert	✓		
Charging function	x		
Power	3x1.5V AAA batteries		



HT6020

Carbon Monoxide Detector



Specifications	Range	resolution	Basic accuracy
Combustible gas detection	0~999ppm	1ppm	0~200ppm(±20ppm) 200~2000ppm(±10%) 2000~5000ppm(±20%)
Display	LCD		
Alarm mode	Sound and light alarm		
Signal intensity display	analog bar+ value		
Signal intensity indication method	lamp light		
Auto Power Off	No operation will shut down automatically in about 10 minutes.		
FLASH LIGHT	x		
Low battery indication	✓		
Buzzer alert	✓		
Charging function	x		
Power	2x1.5V AAA batteries		



Halogen Detector

HT6000

Specifications	Range	resolution	Basic accuracy
Combustible gas detection	0~500ppm	1ppm	0~100ppm(±20ppm) 100~500ppm(±20%)
Display	LCD		
Power down storage	✓		
Auto Power Off	✓		
Data hold	✓		
Clear zero	✓		
Low battery indication	✓		
Two-color backlight	✓		
White lighting	✓		
Purple lighting	✓		
Buzzer alert	✓		
Power	3.7V Li-ion battery		



Halogen Detector

HT6002

Specifications	Range	resolution	Basic accuracy
gas detection	0~1000ppm	1ppm	±20%
Display	LCD		
Power down storage	✓		
Auto Power Off	✓		
Low battery indication	✓		
Two-color backlight	✓		
White lighting	✓		
Purple lighting	X		
Power	3.7V Li-ion battery		



HT680

Temperature & Humidity Meter



Specifications	
Temperature Range	-9.9°C-60°C(14.18°F-140°F)
Accuracy Of Temperature	±1°C (1.8°F)
Resolution Of Temperature	0.1°C/°F
Humidity Range	10%RH-99%RH
Accuracy Of Humidity	20%~ 90%: ±5%RH Other: ±7%RH
Resolution Of Humidity	1%
Display	black and white screen
Low Voltage Display	✓
Comfort Display	✓
Power Supply	3V CR2032 batteries
Weight	Approx.22g
Size	44.5x44.5x13mm
QTY	200pcs
Safety Rating	EN61326-1



HT681

Temperature & Humidity Meter



Specifications	
Temperature Range	-9.9°C-60°C(14.18°F-140°F)
Accuracy Of Temperature	±1°C (1.8°F)
Resolution Of Temperature	0.1°C/°F
Humidity Range	10%RH-99%RH
Accuracy Of Humidity	20%~ 90%: ±5%RH Other: ±7%RH
Resolution Of Humidity	1%
Display	black and white screen
Low Voltage Display	✓
Comfort Display	✓
Power Supply	3V CR2032 batteries
Weight	Approx.35g
Size	71.5x44.5x14mm
QTY	200pcs
Safety Rating	EN61326-1



Temperature&Humidity Meter

HT682

Specifications	
Temperature Range	-9.9°C-60°C(14.18°F-140°F)
Accuracy Of Temperature	±1°C (1.8°F)
Resolution Of Temperature	0.1°C/°F
Humidity Range	10%RH-99%RH
Accuracy Of Humidity	20%~ 90%: ±5%RH Other: ±7%RH
Resolution Of Humidity	1%
Display	black and white screen
Low Voltage Display	✓
Comfort Display	✓
Time Display	✓
24/12 Hour Switching	✓
°C/°F Shift	✓
Max/Min	✓
Time Period Display	✓
Power Supply	2x1.5V AAA batteries
Weight	Approx.69g
Size	89x70x23mm
QTY	200pcs
Safety Rating	EN61326-1



Temperature&Humidity Meter

HT683

Specifications	
Temperature Range	-9.9°C-60°C(14.18°F-140°F)
Accuracy Of Temperature	±1°C (1.8°F)
Resolution Of Temperature	0.1°C/°F
Humidity Range	10%RH-99%RH
Accuracy Of Humidity	20%~ 90%: ±5%RH Other: ±7%RH
Resolution Of Humidity	1%
Display	black and white screen
Low Voltage Display	✓
Comfort Display	✓
Time Display	✓
24/12 Hour Switching	✓
°C/°F Shift	✓
Max/Min	✓
Time Period Display	✓
Power Supply	2x1.5V AAA batteries
Weight	Approx.74g
Size	110x64x22mm
QTY	200pcs
Safety Rating	EN61326-1



HT62

Temperature & Humidity Meter



Specifications	Range	resolution	Accuracy
Ambient Temperature	-20°C~60°C(-4°F~140°F)	0.1°C(0.1°F)	0°C ~ 45°C: ±1.0°C other: ±1.5°C
Ambient Humidity	0.0%~99.9%	0.1%	20%~ 80%: ±3.0%RH other: ±4.0%RH
Wet Bulb Temperature	-20°C~60°C(-4°F~140°F)	0.1°C(0.1°F)	0°C ~ 45°C: ±1.0°C other: ±1.5°C
Dew Point Temperature	-50°C~60°C(-58°F~140°F)	0.1°C(0.1°F)	0°C ~ 45°C: ±1.0°C other: ±1.5°C
Display	LCD		
°C/°F	✓		
Max/Min	✓		
Auto Power Off	✓		
Low Battery Indication	✓		
Power	2x1.5V AAA batteries		
Weight	Approx.46g		
Size	180X32X31mm		
QTY	80pcs		
Safety Rating	EN61326-1		



Temperature&Humidity Meter

HT607

Specifications	Range	Resolution	Accuracy
Ambient Temperature	-20°C~60°C(-4°F~140°F)	0.1°C(0.1°F)	0°C ~ 45°C: ±1.0°C other: ±1.5°C
Ambient Humidity	0.0%~99.9%	0.1%	20%~ 80%: ±3.0%RH other: ±4.0%RH
Wet Bulb Temperature	-20°C~60°C(-4°F~140°F)	0.1°C(0.1°F)	0°C ~ 45°C: ±1.0°C other: ±1.5°C
Dew Point Temperature	-50°C~60°C(-58°F~140°F)	0.1°C(0.1°F)	0°C ~ 45°C: ±1.0°C other: ±1.5°C
Display	black and white screen		
°C/°F	✓		
Data Hold	✓		
Max/Min	✓		
Auto Power Off	✓		
Low Battery Indication	✓		
Power	3x1.5V AAA batteries		
Weight	Approx.115g		
Size	142X58X28mm		
QTY	50pcs		
Safety Rating	EN61326-1		



HT618

Temperature & Humidity Meter



Specifications	Range	Resolution	Accuracy
Ambient Temperature	-20°C~60°C(-4°F ~140°F)	0.1°C(0.1°F)	0°C ~ 45°C: ±1.0°C other: ±1.5°C
Ambient Humidity	0.0%~99.9%	0.1%	20%~ 80%: ±3.0%RH other: ±4.0%RH
Wet Bulb Temperature	-20°C~60°C(-4°F ~140°F)	0.1°C(0.1°F)	0°C ~ 45°C: ±1.0°C other: ±1.5°C
Dew Point Temperature	-50°C~60°C(-4°F ~140°F)	0.1°C(0.1°F)	0°C ~ 45°C: ±1.0°C other: ±1.5°C
Display	Negative display screen		
Backlight	✓		
Data Hold	✓		
Max/Min/Avg Measurement	✓		
Data Storage	✓		
Auto Power Off	✓		
Low Battery Indication	✓		
Power	3x1.5V AAA batteries		
Weight	Approx.113g		
Size	180X60X33mm		
QTY	40pcs		
Safety Rating	EN61326-1		



Digital Meat Thermometer/One Test Lead

HT690

Specifications	
Range Of Temperature To Be Measured	-50°C ~300°C
Accuracy	±1°C (-20°C ~150°C) ±1.5°C (150°C~200°C) Other:±2°C
Display Resolution	0.1°C
Frequency Of Measurement	2times/second
Battery Type	CR2302 button cell
Battery Life	300hour
Length Of Probe Sensor	130mm
Working Temperature And Humidity	-10 ~ 50°C/ 20 ~ 90%RH
Storage Temperature And Humidity	-20 ~ 60°C/ 20 ~ 90%RH
Data Hold Function	✓
Max Function	✓
Min Function	✓
Under Voltage Alert	✓
Backlight Function	✓
°C/°F Unit Conversion	✓
Power Supply	3V CR2032 batteries
Weight	Approx.36g
Size	244x32x19mm
QTY	50pcs
Safety Rating	EN61326-1



HT691

Digital Meat Thermometer/One Test Lead



Specifications	
Range Of Temperature To Be Measured	-50°C ~300°C
Accuracy	-20°C ~150°C : ±1°C 150°C~200°C:±1.5°C Other:±2°C
Display Resolution	0.1°C
Frequency Of Measurement	2times/second
Battery Type	CR2032 button cell
Battery Life	300hour
Length Of Probe Sensor	130mm
Working Temperature And Humidity	-10 ~ 50°C/ 20 ~ 90% RH
Storage Temperature And Humidity	-10 ~ 60°C/ 20 ~ 90% RH
Data Hold Function	✓
Max Function	✓
Min Function	✓
Under Voltage Alert	✓
Backlight Function	✓
°C/°F Unit Conversion	✓
Power Supply	3V CR2032 batteries
Weight	Approx.54g
Size	160x38x21mm
QTY	50pcs
Safety Rating	EN61326-1



Digital Luxmeter

HT63

Specifications	
Range	1000/10000/100000 LUX; 100/1000/10000 FC
Accuracy	±(3.0%+5)
Display	LCD
Max/Min	✓
Auto Power Off	✓
Low Battery Indication	✓
Power	2x1.5V AAA batteries
Weight	Approx.49g
Size	163X32X31mm
QTY	80pcs
Safety Rating	EN61326-1



HT603

Digital Luxmeter



Specifications	Range	Accuracy
Lux/FC	0~200000 LUX/0~20000 FC	±(3.0% +5)
Temperature	-20°C~60°C(-4°F~140°F)	0.0°C ~ 45.0°C(32°F ~113°F) : ±1.0°C/2.0°F Other: ±1.5°C/3.0°F
Humidity	0.0%~99.9%RH	20%~ 80%: ±5.0RH other: ±6.0RH
Data Hold	✓	
Backlight	✓	
Max/Min Hold	✓	
Auto Power Off	✓	
Low Battery Indication	✓	
Power	3x1.5V AAA batteries	
Weight	Approx.136g	
Size	142X58X28mm	
QTY	50pcs	
Safety Rating	EN61326-1	



Digital Light/ LED Light Meter

HT620/HT620L

Specifications	HT620	HT620L
Range	1000/10000/200000 LUX; 100/1000/20000 FC	
Accuracy	±(3.0%+5)	±(3.0%+5)
Led Type	Standard light	Standard light -L0
		White LED light -L1
		Red LED light -L2
		Yellow LED light -L3
		Green LED light -L4
		Blue LED light -L5
		Purple LED light -L6
		Self-defined light source coefficient -L7
		Self-defined light source coefficient -L8
	Self-defined light source coefficient -L9	
Display	LCD bargraph	
Auto/Manual	✓	
Range	✓	
Data Hold	✓	
Max/Min/Avg	✓	
Hold	✓	
Relative Value	✓	
Auto Power Off	✓	
Low Battery Indication	✓	
Power	3x1.5V AAA batteries	
Weight	Approx.142g	
Size	190X60X33mm	
QTY	40pcs	
Safety Rating	EN61326-1	



HT64

Sound Level Meter



Specifications	
Sound Pressure Accuracy	±1.5dB (94dB@1KHz), ±5dB (94dB@8KHz)
Frequency Response	30Hz — 8KHz
Dynamic Range	50 dB
Measuring Range	30—130dBA
Weighting Properties	A
Time Properties	FAST 125ms, SLOW 1sec
Microphone	Polarized capacitance microphone
Max/min	✓
Auto Power Off	✓
Low Battery Indication	✓
Power	2x1.5V AAA batteries
Weight	Approx.47g
Size	180X32X31mm
QTY	80pcs
Safety Rating	EN61326-1



Digital Sound Level Meter

HT602A/B

Specifications	Functions	Accuracy	
		HT602A	HT602B
Sound Pressure	Range	30—130dBA	30—130dBA/30—130dBC
	Accuracy	±1.5dB (94dB @ 1KHz) ±5dB (94dB@8KHz)	±1.5dB (94dB @ 1KHz) ±5dB (94dB@8KHz)
	Frequency response	30Hz — 8KHz	30Hz — 8KHz
	Frequency weighting	A weighting	A/C weighting
	time weight	FAST 125ms, SLOW 1sec	FAST 125ms, SLOW 1sec
	Analog bar	✓	✓
	Over Range	UL/OL	UL/OL
Ambient Temperature	Range	-20.0°C ~ 60.0°C(-4.0°F~140.0°F)	
	Accuracy	0.0°C ~ 45.0°C(32°F ~113°F) : ±1.0°C ; other: ±1.5°C	
Ambient Humidity	Range	0.0~99.9%	
	Accuracy	20%~ 80%: ±5.0RH ; other: ±6.0RH	
Wet Bulb Temperature	Range	-20.0°C ~ 60.0°C(-4.0°F~140.0°F)	
	Accuracy	0.0°C ~ 45.0°C(32°F ~113°F) : ±1.0°C ; other: ±1.5°C	
Dew Point Temperature	Range	-50.0°C ~ 60.0°C(-58.0°F~140.0°F)	
	Accuracy	0.0°C ~ 45.0°C(32°F ~113°F) : ±1.0°C ; other: ±1.5°C	
Backlight	✓		
Data Hold	✓		
Max/Min	✓		
Auto Power Off	✓		
Low Battery Indication	✓		
Power	3x1.5V AAA batteries		
Weight	Approx.115.7g		
Size	142X58X28mm		
QTY	50pcs		
Safety Rating	EN61326-1		



HT622A/B

Digital Sound Level Meter



Specifications	HT622A	HT622B
Sound Pressure Accuracy	±1.5dB (94dB @ 1KHz) , ±5dB (94dB@8KHz)	±1.5dB (94dB @ 1KHz) , ±5dB (94dB@8KHz)
Frequency Response	30Hz — 8KHz	30Hz — 8KHz
Dynamic Range	50 dB	50 dB
Measuring Range	30—130dBA	30—130dBA , 30—130dBC
Weighting Properties	A	A /C
Time Properties	FAST 125ms, SLOW 1sec	FAST 125ms, SLOW 1sec
Microphone	Polarized capacitance microphone	Polarized capacitance microphone
Range	30—80dB, 40—90dB, 50—100dB, 60—110dB, 70—120dB, 80—130dB	30—80dB, 40—90dB, 50—100dB, 60—110dB, 70—120dB, 80—130dB
Bargraph	✓	✓
Auto/Manual Range	✓	✓
Under/Over Range	UNDER/OVER	UNDER/OVER
Backlight	✓	✓
Data Hold	✓	✓
Max/Min Hold	✓	✓
Auto Power Off	✓	✓
Low Battery Indication	✓	✓
USB		✓
Power	3x1.5V AAA batteries	
Weight	Approx. 176g	
Size	189X60X33mm	
QTY	40pcs	
Safety Rating	EN61326-1	



Digital Anemometer

HT605/HT605S

Specifications	Range	Accuracy	
		HT605	HT605S
Air Velocity	0.70~30.00m/s (meter per second)	0.01	0.01
	2.50~108.0km/h (kilometer per hour)	0.01~0.1	0.01~0.1
	2.30~98.50ft/s (feet per second)	0.01	0.01
	137.0~5900ft/m (feet per minute)	0.1~1	0.1~1
	1.30~58.30 knots (nautical miles per hour)	0.01	0.01
	1.50~67.10 mile/h (miles per hour)	0.01	0.01
Temperature	-20°C~60°C(-4°F~140°F)	0.0°C ~ 45.0°C(32°F ~113°F) : ±1.0°C/2.0°F Other: ±1.5°C/3.0°F	0.0°C ~ 45.0°C(32°F ~113°F) : ±1.0°C/2.0°F Other: ±1.5°C/3.0°F
Humidity	0.0%~99.9%RH	20%~ 80%: ±5%RH Other: ±6%RH	20%~ 80%: ±5%RH Other: ±6%RH
wind speed rating	0-12		✓
Data Hold		✓	✓
Backlight		✓	✓
Max/Min Measurement		✓	✓
Auto Power Off		✓	✓
Low Battery Indication		✓	✓
Power	3x1.5V AAA batteries		
Weight	Approx. 113g		
Size	142X58X28mm		
QTY	50pcs		
Safety Rating	EN61326-1		



HT625A/B

Digital Anemometer/ With Temperature & Humidity



Specifications	Range	Resolution	Accuracy	
			HT625A	HT625B
Range Of Air Speed	0.40~30.00m/s	0.01	±(2.0%+0.5m/s)	±(2.0%+0.5m/s)
	1.40~108.0km/h	0.01~0.1	±(2.0%+1.8km/h)	±(2.0%+1.8km/h)
	1.30 ~ 98.50ft/s	0.01	±(2.0%+1.6ft/s)	±(2.0%+1.6ft/s)
	0.80~ 58.30Knots	0.01	±(2.0%+1.0knots)	±(2.0%+1.0knots)
	0.90~ 67.10mile/h	0.01	±(2.0%+1.1mile/h)	±(2.0%+1.1mile/h)
Range Of Air Volume	0-9999 CFM(CMM, CMS)	0.01~0.1		0.01~1
Air Temperature	-20~60°C (-4~140°F)	0.1		±1.5°C
Dew Point Temperature Of Air	-20~60°C (-4~140°F)	0.1		±1.5°C
Wet Bulb Temperature	-50~60°C (-58~140°F)	0.1		±1.5°C
Air Humidity	5.0%~95.0%RH	0.1		±4.0%RH
USB				✓
Display			9999 counters with bargraph	9999 counters
Backlight	✓			
Air Duct Area Setting	✓			
Data Hold	✓			
Max/Min/Avg Hold	✓			
Auto Power Off	✓			
Low Battery Indication	✓			
Power	3x1.5V AAA batteries			
Weight	Approx.137g			
Size	197X60X33mm			
QTY	40pcs			
Safety Rating	EN61326-1			



Wood Moisture Meter

HT65

Specifications	Range: 0.0~58.0% Accuracy: ±2.0%
Selection Of Materials	1.The weight ratio of beech, spruce, larch, birch, cherry, walnut: 8.5-60.0%. 2.The weight ratio of oak, pine, maple, ash, Douglas fir, and eucalyptus: 6.8-53.4%. 3.The weight ratio of cement mortar layer to concrete: 0.9~24.5%. 4.The weight ratio of anhydrous gypsum mortar layer: 0.0 ~ 12.2%. 5.The weight ratio of cement mortar: 0.7~9.2%. 6.The weight ratio of lime mortar to gypsum: 0.5 ~11.0%. 7.The Weight ratio of bricks: 0.0~17.8%.
Backlight	Red/Orange/Green tricolor backlight
Max Measurement	✓
Auto Power Off	✓
Low Battery Indication	✓
Power	2x1.5V AAA batteries
Weight	Approx.62.5g
Size	163X32X31mm
QTY	80pcs
Safety Rating	EN61326-1



Wood Moisture Meter

HT67

Specifications	Range: 0.0~58.0% Accuracy: ±2.0%
Moisture measurement	Range: 0.0~58.0% Accuracy: ±2.0%
Selection of Materials	The weight ratio of beech, spruce, larch, birch, cherry, walnut: 8.5-60.0%. The weight ratio of oak, pine, maple, ash, Douglas fir, and eucalyptus: 6.8-53.4%. The weight ratio of cement mortar layer to concrete: 0.9~24.5%. The weight ratio of anhydrous gypsum mortar layer: 0.0 ~ 12.2%. The weight ratio of cement mortar: 0.7~9.2%. The weight ratio of lime mortar to gypsum: 0.5 ~11.0%. The Weight ratio of bricks: 0.0~17.8%.
Backlight	Red/Orange/Green tri-color backlight
Data hold	✓
Auto power off	✓
Low battery indication	✓
Power	2x1.5V AAA batteries
Weight	Approx.52g
Size	161X24X30mm
QTY	200pcs
Safety Rating	EN61326-1



HT633

Wood Moisture Meter



Specifications	Range	Accuracy
Material Humidity	0.0~57.0%	±2.0%
Ambient Temperature	-20°C~60°C (-4°F~140°F)	±1.0°C
Ambient Humidity	0.0%~99.9%	20%~80% ±5%RH Other:±6%RH
Material Type Selection	✓ (Built in characteristic curves of 7 materials)	
Data Hold	✓	
Backlight	Red/Orange/Green tricolor backlight	
Max/Min Hold	✓	
Auto Power Off	✓	
Low Battery Indication	✓	
Power	3x1.5V AAA batteries	
Weight	Approx.109g	
Size	142X58X28mm	
QTY	50pcs	
Safety Rating	EN61326-1	



A Mode
Hardwood: 8.8~54.8 %



B Mode
Softwood: 6.8~47.9 %



C Mode
Concrete: 0.9~22.1 %



D Mode
Anhydrous gypsum mortar layer:0.0 ~11.0 %



E Mode
Cement mortar: 0.7~8.6 %



F Mode
Lime mortar, gypsum: 0.6~9.9 %



G Mode
Brick: 0.0~16.5 %

HT632

Wood Moisture Meter

Specifications	
Moisture Measurement	Range: 0.0%~57.0% Accuracy: ±2.0%
Temperature	Range: -20.0°C~60.0°C (-4.0°F~140.0°F) Accuracy: ±1.5°C
Relative Humidity	Range: 0.0~99.9%RH Accuracy: ±4.0%RH
Selection Of Materials	✓
Multipoint Measurement	✓
Calculated Average Value	✓
Max/Min	✓
Data Hold	✓
Auto Power Off	✓
Low Battery Indication	✓
Power	3x1.5V AAA batteries
Weight	Approx.122g
Size	148X60X33mm
QTY	40pcs
Safety Rating	EN61326-1



HT636

Differential Pressure Manometer



Functionalindex	differential manometer		
measuring range	±5PSI		
Can withstand the maximum pressure	10PSI		
repeatability	±0.2%(max±0.5%FS)		
precision	±0.3%FS		
Linearity/lag	±0.29%FS		
pressure unit	inH2O; PS; mba; kPa; inHg; mmHg; ozin2; ftH2O; cmH2O; kgcm2; bar		
show	Black and white screen		
Maximum, minimum and average measurement	✓		
automatic shut-down	✓		
Undervoltage indication	✓		
Unit switching	✓		
in a bad/poor light	✓		
timeset	✓		
Data retention	✓		
Response time	About 0.5 seconds		
	unit	measuring range	resolution ratio
	PSI	±5.000	0.001
	inH ₂ O	±138.4	0.1
	mbar	±344.7	0.1
	kPa	±34.47	0.01
	inHg	±10.18	0.01
	mmHg	±258.5	0.1
	ozin ²	±80.00	0.01
	ftH ₂ O	±11.53	0.01
	cmH ₂ O	±351.5	0.1
	kgcm ²	±0.3515	0.001
	bar	±0.3447	0.001
	mmH ₂ O	±3515	1
Power Supply	3*1.5V		
conform	0-50°C		
Storage environment	-10-60°C		



EMF meter

HT627

Function	Specifications	
AC magnetic field		3-axis
	Measuring range:	0.01~200.0uT/0.1~2000mG
	Measuring range:	20uT/200uT; 200mG/2000mG
	Resolution:	0.01/0.1uT; 0.1/1mG
	Frequency range:	30~1000Hz
AC electric field		1-axis
	Measuring range:	1~2000V/m
	Measuring range:	2000V/m
	Resolution:	1V/m
	Frequency range:	30~1000Hz
RF/microwave		1-axis
	Measuring range:	0.001~100.0mW/m2
	Measuring range:	2/20/100mW/m2
	Resolution:	0.001/0.01/0.1mW/m2
	Frequency range:	50MHz~3.5GHz
Audible light alarm	Audio and light (green, orange, red) indication exceeding the built-in threshold	
Mute function	✓	
Overload display	✓	
Data hold	✓	
Max hold	✓	
Peak	✓	
Low battery indication	✓	
Analog bar	✓	
Auto power off	Approx. 15 minutes	
Use environment	0~40°C/40~80%RH	
Power	3x1.5V AAA Batteries	
Weight	Approx. 140g	
Size	142x58x28mm	
QTY	50pcs	
Safety Rating	EN61326-1	



HT628A/B

EMF meter



Function	Specifications	HT628A	HT628B
AC magnetic field		3-axis	
	Measuring range:	0.01~200.0uT/0.1~2000mG	
	Measuring range:	20uT/200uT; 200mG/2000mG	
	Resolution:	0.01/0.1uT; 0.1/1mG	
AC electric field		1-axis	
	Measuring range:	1~2000V/m	
	Measuring range:	2000V/m	
	Resolution:	1V/m	
RF/microwave		1-axis	
	Measuring range:	0.001~200.0mW/m ²	
	Measuring range:	2/20/200mW/m ²	
	Resolution:	0.001/0.01/0.1mW/m ²	
Audible light alarm	Audio and light indication exceeding the built-in threshold		
	Mute function	✓	
Overload display	✓		
Data hold	✓		
Max	✓		
Peak	✓		
Low battery indication	✓		
Analog bar	✓		
Auto power off	Approx. 15 minutes		
Use environment	0~40°C/40~80%RH		
Power	Built-in 3.7V lithium battery/USB charging		
Weight	Approx. 173g		
Size	142X70X25mm		
QTY	50pcs		
Safety Rating	EN61326-1		



Nuclear Radiation Detector

HT629

Specifications	
Type of detection rays	β rays, γ rays, Xrays
Detector	Energy Compensation GM Tube(Geiger Counter Meter)
Dose equivalent rate	0.00-50000 μ Sv/h(50mSv/h)
Cumulative dose equivalent	0.00 μ Sv-5000mSv
Energy range	48keV-1.5MeV±30%(for 137Cs-)
Sensitivity	80CPM/uSv
Relative intrinsic error	≤±15%(100uSv/h below); ≤±20%(-17%~25%); ≤±25%(1000uSv/h above)
Unit switching	μ Sv/h, mR/h, cps, cpm
Data Hold	✓
Low battery indication	✓
Backlight alarm prompts	Green/Red
Buzzer alarm prompts	✓
Buzzer on/off	✓
Maximum	✓
Average value	✓
Accumulated value	✓
Auto power off	✓
STN display screen	✓
Power	3x1.5V AAA batteries
Weight	Approx. 144g
Size	142x58x28mm
QTY	50pcs
Safety Rating	EN61326-1



Nuclear radiation hazard

Damage to human body and possible symptoms



cataract



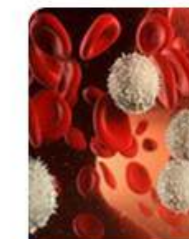
Lung problems



alopecia



skin disease



leukemia



Thyroid problems

HT81

Nuclear Radiation Detector



Nuclear radiation detector specification	
Product name	
Type of detection rays	βrays、γrays、Xrays
Detector	Geiger Counter Meter
Dose equivalent rate	0.00-50000μSvh(50mSv/h)
Cumulative dose equivalent	0.00μSv-5000mSv
Energy range	48keV-1.5MeV±30%(137Cs-)
Sensitivity	80CPM/μSv
Relative intrinsic error	-17%~25%
Low battery indication	✓
Backlight alarm prompts	Green/Red
Buzzer alarm prompts	✓
Maximum	✓
Average value	✓
Accumulated value	✓
Auto power off	✓
power :	2x1.5V AAA Batteries



Coating Thickness Gauge

HT616

Specifications	
Automatic recognition base	Fe Iron-based/non-iron-based identification
Three-point calibration	Zero, drift, benchmark
Imperial unit selection	✓
Maximum and minimum mean value selection	✓
Two-color backlight alarm (Buzzer alarm)	✓
Probe force	0.3~1.5N
Limit setting	0~1500um
Measurement mode	Single, Continuous, Single Point Pass File Multi-Point Pass File
Screen rotation	✓
Automatic calibration	Automatic calibration based on 7 different calibration substrates 0/50/100/250/500/1000/1500
Coupling icon	✓
Screen	LCD
Measuring range	0~1500um/0~70.8mil/0~1.5mm
Resolution	(0.1um(<100um), 1um(≥100um))/0.1mil/0.001mm
precision	±(3%H+2um)
Minimum measurement area	Minimum diameter: 25X25mm(magnetism) 25X25mm(nonmagnetic)
Minimum radius of curvature	convexity: 2mm Concave surface:
Minimum substrate thickness	magnetism:0.5mm nonmagnetic:0.3mm
Low battery	✓
Automatic shutdown	✓
Data storage	✓
Working environment	0°C~50°C Humidity:2%~90%
Power	3.7V 700mAH lithium battery
Weight	Approx. 152g
Size	148x66x38mm
QTY	40pcs
Safety Rating	EN61326-1



Used Car Market



Automobile Works



Industrial Lacquer

HT662

Brake Fluid Liquid Tester



Specification	
Display	LCD Display
Range Of Voltage Detection	0%~4%
Alarm Mode	Sound and light alarm
Probe Shape	Oblate shape
Backlight	Red and green double color backlight
Signal Intensity Indication Method	sound from slow to fast; backlight from green to red; the display data of LCD is from low to high
Auto Power Off	✓
Low-Battery Indication	✓
Power	2x1.5V AAA batteries
Weight	Approx.39g
Size	174X23X28mm
QTY	200pcs
Safety Rating	EN61326-1



HT663 / 663L

Brake Fluid Liquid Tester



HT 663	Range	resolution	Basic accuracy
Moisture Detection	0~4%	0.1%	±0.1%
Display	LCD		
Date hold	✓		
Auto Power Off	✓		
Low battery indication	✓		
Trichromatic backlight	✓		
Flashlight	✓		
Buzzer alert	✓		
Power	2x1.5V AAA batteries		
Weight	Approx.59g		
Size	204x24x30mm		
QTY	200pcs		
Safety Rating	EN61326-1		

HT 663L	Range	resolution	Basic accuracy
Moisture Detection	0~4%	0.1%	±0.1%
Display	LCD		
Auto Power Off	✓		
Low battery indication	✓		
Trichromatic backlight	✓		
Flashlight	✓		
Buzzer alert	✓		
Power	2x1.5V AAA batteries		



Brake Fluid Liquid Tester

HT5009

	Range	resolution	Basic accuracy
Moisture Detection	0~4%	0.1%	±0.1%
Display	LCD		
Auto Power Off	✓		
Low battery indication	✓		
Trichromatic backlight	✓		
Flashlight	✓		
Buzzer alert	✓		
Power	2x1.5V AAA batteries		



Battery Tester

HT3500E

Function	HT3500E
Screen size	2.8 inches.
Backlight	✓
Battery type selection	STD, EFB, AGM, GEL
Detection standard type selection	EN, IEC, SAE, CCA, DIN, AH
Battery life detection	✓
Battery remaining power detection	✓
Battery output voltage detection	✓
Battery internal resistance detection	✓
Battery discharge current detection	✓
Burnout protection	✓
Poor contact warning for positive and negative inputs	✓
Auto power off	✓
Backlight display	✓
Power detection	✓
Data storage	✓
Voltage measurement range	8~36V
Resistance measurement range	1~100mΩ
Current measurement range	0-1999CCA
Resistance measurement resolution	0.05mΩ
Weight	Approx.328g
Dimension	149x82x34.5mm
QTY	50pcs



HT805

Optical Power Meter



Function	Description
Optical power measurement	✓
Wavelength switching for optical power measurement	✓
Offset setting	✓
Reference value setting	✓
Optical power unit switching	✓
VFL (Visual Fault Locator)	✓
VFL flashing mode switching	✓
Network cable sequence detection (pairing)	✓
Network cable QC	✓
Cable tracing	✓
Data storage	✓
LED backlight	✓
Auto power-off	✓
Backlight display	✓
Battery detection	✓
Data storage	✓
Optical power measurement range	T-type (-70~+10dBm) C-type (-50~+26dBm)
Optical power meter type	InGaAs
Optical power meter input terminal	2.5mm
Wavelength response range	700~ 1700nm
Standard wavelength	850\980\1270\1300\1310\1490\1550\1577\1625 nm
Resolution	0.01dB
Accuracy	±0.2dB
Frequency identification	270Hz/330Hz/1KHz/2kHz
Wavelength identification	Supported (requires compatible light source)
Pairing/tracing/crimping interface	RJ45 interface *2
Battery	Rechargeable lithium battery 1400mAh
Charging interface	Type-C
VFL Terminal	2.5mm
VFL output power	1~30mW selectable
Cable sequence indicator	✓
NCV	✓
Cable tracing	✓
Flashlight	✓
Cable sequence input terminal	RJ45 *1
Power	2*AAA Alkaline battery 5V
Size	140X77X43mm
Safety rating	EN61326-1



Cable Tester

HT812

Specifications	
Display	LED
8P6P4P2P / Shielded Line Measurement	✓
Anti-Burn	✓
Online Testing With Energized Equipment	✓
Low Battery Indicator	✓
Power	2x1.5V AAA batteries
Weight	Approx. 69.3g
Size	96X62X24mm
QTY	80pcs
Safety Rating	EN61326-1



HT800

Network Cable Tester

NEW



HT800AT

HT800R



HT800BT

HT800R

Name of Parameter	HT800AT/R	HT800BT/R
Signal transmission format	multi-frequency pulse	multi-frequency pulse
Signal output level	8Vp-p	8Vp-p
Signal distance	≥2km	≥2km
Network line hunting	(Supports shielded or unshielded network lines on <60V or non-live switches, routers and other devices)	
Telephone line hunting	Look for a phone line with the other end plugged into a live or unlive device	
Determine the short-circuit position of the cable	✓	✓
Judge the short circuit position of the wire	✓	✓
Network line to-line function		✓
Network cable pressure check function	✓	✓
Red pen function		✓
Phone status prompt function	✓	
Low voltage warning		✓
auto power-off	✓	✓
Lighting function	✓	✓
NCV function	✓	✓
Adjustable sensitivity		✓
Power	1X9V 6F22 battery	
Fuselage weight	Transmitter: 82g, Receiver: 85g	
Body size	Transmitter: 125x60x32mm, Receiver: 190x47x30mm	



NEW

Network Cable Tester

HT801

Name of Parameter	HT801AT/R	HT801BT/R
Signal transmission format	multi-frequency pulse	multi-frequency pulse
Signal output level	8Vp-p	8Vp-p
Signal distance	≥2km	≥2km
Network line hunting	(Supports shielded or unshielded network lines on <60V or non-live switches, routers and other devices)	
Telephone line hunting	Look for a phone line with the other end plugged into a live or unlive device	
Determine the short-circuit position of the cable	✓	✓
Judge the short circuit position of the wire	✓	✓
Network line to-line function	✓	✓
Network cable pressure check function	✓	✓
Red pen function		✓
Phone status prompt function	✓	
Low voltage warning	✓	✓
auto power-off	✓	✓
Lighting function	✓	✓
NCV function	✓	✓
Adjustable sensitivity	✓	✓
Sensitivity profileLED display	✓	✓
POE Voltage cue	✓	✓
Power	1X9V 6F22 battery	
Fuselage weight	Transmitter: 82g, Receiver: 85g	
Body size	Transmitter: 125x60x32mm, Receiver: 190x47x30mm	



HT801AT

HT801R



HT801BT

HT801R



HT630A/B

PH Meter



Functional index	HT630A	HT630B
PH measurement range	0~14PH	0~14.00PH
PH resolution	0.1PH	0.01PH
PH measurement accuracy	±0.1PH	±0.1PH
Temperature measuring range	0~60°C (32°F~140°F)	0~60°C (32°F~140°F)
Temperature resolution	0.1°C/0.1°F	0.1°C/0.1°F
Temperature accuracy	±1.0°C	±1.0°C
Automatic temperature compensation	✓	✓
Display screen	HTN	HTN
Three-point calibration	PH4.0,PH6.86,PH9.18	PH4.0,PH6.86,PH9.18
Three-color backlight (strong acid and alkali alarm)	✓	✓
Temperature display	✓	✓
C/F switchover	✓	✓
Data retention	✓	✓
Low voltage reminder	✓	✓
Automatic shutdown	✓	✓
Power source	2x1.5V AAA batteries	2x1.5V AAA batteries



PH Meter

HT631A/B

Specifications	HT631A	HT631B
PH	Range: 0.0~14.0PH Resolution: 0.1PH Accuracy: ±0.1PH	Range: 0.00~14.00PH Resolution: 0.01PH Accuracy: ±0.1PH
Temperature	Range: 0.0~60.0°C Resolution: 0.1°C Accuracy: ±1.0°C	Range: 0.0~60.0°C Resolution: 0.1°C Accuracy: ±1.0°C
Display	LCD	LCD
ATC	✓	✓
Tricolor backlight	✓	✓
Calibration	PH4.0,PH6.86,PH9.18	PH4.00,PH6.86,PH9.18
°C/°F	✓	✓
Data hold	✓	✓
Low battery indication	✓	✓
Auto Power Off	✓	✓
Class of protection	IP68	IP68
Measuring speed	2 times per second	2 times per second
Electrode measuring rod life	>6 months (under good maintenance)	>6 months (under good maintenance)
Power	2X1.5V AAA batteries	3.7V Li-ion battery
Weight	Approx.84g	Approx.84g
Size	185x36x36mm	
QTY	80pcs	
Safety Rating	EN61326-1	



Accessories

Test leads/Alligator Clip/Thermometer Probe



H3001
 Probe:Length 130mm,TipΦ2mm
 Plug:Φ4mm 90 degree bend plug
 Wire:20AWG,red/black
 Length:1000mm
 Safety Class:EN61010-031,1000V CATIII/600V CATIV,MAX 10A



H3002
 Probe:Length 120mm,TipΦ2mm
 Plug:Φ4mm 90 degree bend plug
 Wire:22AWG,red/black
 Length:800mm
 Safety Class:EN61010-031,1000V CATII,MAX 10A



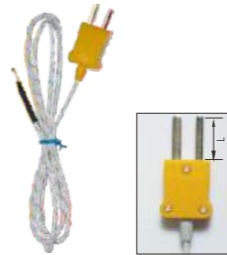
H3004
 Probe:Length 90mm ,TipΦ2mm
 Plug:Φ4mm 90 degree bend plug
 Wire:24WG,red/black
 Length:800mm
 Safety Class:EN61010-031,1000V CATII



H3006
 Probe:Length 130mm,TipΦ4mm Banana
 Plug:Φ4mm 90 degree bend plug
 Wire:18AWG,red/black
 Length:1200mm
 Safety Class:EN61010-031,1000V CATIII/600V CATIV,MAX 10A



H3412
 K Type Thermocouple / WRN-01A
 Range:-40~260°C(-40°F~500°F)
 Length:1000mm



H3428A
 H3408A/K Type Thermocouple / WRN-01B
 Range:-40~260°C(-40°F~500°F)
 Length:1000mm
 Type A:Plug Length 12mm,Type B:Plug Length 16mm



H3101
 Medium Alligator Clip
 Plug: Φ4mm Jack
 Color: Red&Black



H3102
 Big Mouth Alligator Clip,MAX 36mm
 Plug: Φ4mm Jack
 Color: Red&Black

Dust case/Tube Fuse

Accessories



Customizable
H126
 Size: 160X90X55mm
 Material:EVA
 Colour:Black



Customizable
H116
 Size: 180X96X50mm
 Material:EVA
 Colour:Black



Customizable
H208
 Size: 260X125X55mm
 Material:EVA
 Colour:Black



Customizable
H206
 Size: 210X110X42mm
 Material:Sacking
 Colour:Black



Customizable
H601
 Size: 270X115X40mm
 Material:Sacking
 Colour:Black



H3901
 A : FF200mA/250V.Φ5X20.VDE/UL
 B : FF400mA/250V.Φ5X20.VDE/UL
 C : FF600mA/250V.Φ5X20.VDE/UL
 D : FF250mA/600V.Φ5X20.VDE/UL
 E : FF400mA/600V.Φ5X20.VDE/UL
 F : FF600mA/600V.Φ5X20.VDE/UL



H3902
 A : FF10A/250V/Φ5X20.VDE/UL
 B : FF10A/600V/Φ5X20.VDE/UL



H3903
 A : FF630mA/250V/Φ6X32mm.VDE/UL
 B : FF600mA/1000V/Φ6X32mm.VDE/UL



H3904
 A : FF10A/250V/Φ6*32mm.VDE/UL
 B : FF10A/1000V/Φ6x32.VDE/UL